

CITY COLLEGE OF NEW YORK

City Facts 2003-2004



TABLE OF CONTENTS

Preface.....	v
Acknowledgments.....	vi

Section I: **Executive Summary**

Commentary on <i>CITY FACTS</i> Tables.....	1
---	---

Section II: **Student Data**

A City College Snapshot

Table Number and Name.....	Page
1 Total Undergraduate and Graduate Student Enrollment, Fall 1994-2003.....	16
2 Undergraduate and Graduate Students by Ethnicity/Race, Fall 1994-2003	18
3 First-time and Continuing Students by Ethnicity/Race and Class Level, Fall 2003	20
4a Admitted and Registered Students, Fall 1994-2003	21
4b Show Rates of Admitted Students, Fall 1994-2003.....	21
5 Students by Class Standing and Enrollment Status, Fall 2003.....	22
6 SEEK Students by Enrollment Status, Fall 1994-2003	23
7 Full/Part-time Students by Enrollment Status, Fall 2003	24
8 Placement Test Results, Fall 1994-2003.....	25
9 Placement Test Results by Enrollment Status, Fall 2003	26
10 Undergraduate and Graduate FTEs, Fall 1994-2003.....	27
11 Undergraduate and Graduate FTEs by Division/School, Fall 2003	29
12 Undergraduate and Graduate Degrees Awarded, 1993-94 through 2002-2003	30
13 All Students by Residence/Zip Code and Gender, Fall 2003	32
14 Students by Native Language and Gender, Fall 2003	33
15 Students by Birth Country and Gender, Fall 2003.....	34

Undergraduate Students

Table Number and Name.....	Page
16 Undergraduate Enrollment, Fall 1994-2003	35
17 Undergraduate Enrollment by Class Status, Fall 1994-2003.....	36
18 Undergraduate Enrollment by Lower/Upper Division and Full/Part-time Status, Fall 1994-2003.....	38
19 Undergraduate FTEs by Class Status, Fall 1994-2003	40
20 Degree-Seeking Juniors/Seniors by Division/School, Fall 1999-2003	42
21 Undergraduates: U.S. Citizens and Non-Resident Aliens by Ethnicity/Race and Full/Part-time Status and Gender, Fall 2003	43
22 Undergraduate Areas of Study by Gender and Ethnicity/Race, Fall 2003	44
23 Undergraduates by Major, Fall 1999-2003.....	45
24 Undergraduate Degrees Awarded by Division or School, 1993-94 through 2002-2003.....	47
25 Bachelor Degrees by Major, Fall 1999-2003.....	48
26 Freshmen: High Schools of Origin, Fall 2003	50
27 New Freshmen and All Undergraduates by Age and Gender, Fall 2003	51
28 SAT Scores for First-time Regular and SEEK Freshmen, Fall 2003	52
29 Total SAT Scores for First-time Regular and SEEK Freshmen by Division, Fall 2003	53

Graduate Students

30 Graduate Enrollment, Fall 1994-2003	54
31 Graduate Students by Division/School, Fall 1999-2003	56
32 Graduate Students: U.S. Citizens and Non-Resident Aliens by Ethnicity and Full/Part-time Status and Gender, Fall 2003	57
33 Graduate and Undergraduate Students: U.S. Citizens and Non-Resident Aliens, Fall 1999-2003	58
34 Masters Degrees and Advanced Certificates Awarded by Division/School, 1993-94 through 2002-2003	59
35 Graduate (Masters and Certificate) Students by Major, Fall 1999-2003.....	60
36 Graduate (Masters and Certificate) Degrees by Major, 1999-2003	63
37 Graduate Students' Areas of Study by Gender and Ethnicity/Race, Fall 2003	65
38 New and All Graduate Students by Age and Gender, Fall 2003	66

Transfer Students

39 Transfer Students by Type of Feeder Institution, Fall 1994-2003.....	67
40 Transfer Students by Feeder Colleges, Fall 2003	68
41 Transfer Students by Area of Study by Ethnicity/Race and Gender, Fall 2003	69
42 New Transfer Students by Age and Gender, Fall 2003	70

Section III: **Employee and Financial Data**

Table Number and Name.....	Page
43 Gender and Ethnicity/Race of Faculty and Staff, 07/01/02-06/30/03	71
44 Faculty by Department, 07/01/02-06/30/03.....	72
45 Financial Aid, 2003-2004	73
46 Financial Aid, 1999-2000 to 2003-2004.....	74
47 Tax-levy Operating Budget, 2002-2003	75
48 Revenues and Expenditures, 2002-2003.....	77
49 Total Revenues and Expenditures, 1998-99 through 2002-03	79
50 Sponsored Programs, 2002-2003	80
51 Sponsored Programs, 1998-99 through 2002-03	82

Section IV: **Reference Sources**

Data Sources and Interpretation of Statistical Tables.....	83
Technical Note	86
Class Standing by Credits	86
Production Note	86
Index	87

LIST of GRAPHS

Graph Number and Name.....	Page
1 Total Undergraduate and Graduate Enrollment, 1994-2003	17
2 Undergraduate and Graduate Ethnicity/Race, Fall 2003	19
10 Undergraduate and Graduate FTEs, Fall 1994-2003	28
12 Undergraduate and Graduate Degrees Awarded, 1992-1993 to 2001-2002.....	31
17 Undergraduates by Class Status, Fall 1994-2003	37
18 Undergraduates by Lower/Upper Division Full/Part-time Status, 1994-2003	39
19 Undergraduate FTEs by Class Status, 1994-2003	41
30 Graduate Enrollment, 1994-2003	55
47 Tax-levy Operating Budget, 2003-2004	76
48 Revenues and Expenditures, 2002-2003.....	78
50 Sponsored Programs, 2002-2003	81

PREFACE

CITY FACTS describes demographic and financial information for The City College of New York. It is an annual (print) publication of the Institutional Research Office (IR) and consists of the four major sections detailed below.

The electronic version is online at: www.ccnycuny.edu. It is in Adobe Acrobat PDF format.¹

I. Commentary on City Facts Tables

This section contains a brief commentary about the information contained in *CITY FACTS* tables. References are given to specific tables for more detailed information. Wherever a parenthesis "()" appears with a number inside, that number is the equivalent of the percent next to it. Percent of change is defined in the *Technical Note* in the *Reference Sources*.

II. Student Data: The Past Decade

Enrollment trends and other student data are given for the Fall 1994 - 2003 semesters. Total student data are presented first, followed by undergraduate, graduate, and then transfer student information.

III. Employee and Financial Data

Data on instructional and non-instructional staff by gender and ethnicity are provided, along with data on budgets, revenues and expenditures.

IV. Reference Sources

Context-specific references are cited in each table and graph in *CITY FACTS*. Details are provided on City University of New York's (CUNY) statistical treatment of enrollment and course data. Information applies to all tables in *CITY FACTS* that cite the CUNY *Show Reg Tape*. Other CUNY and CCNY data sources are also in this section, as are the *Technical Note* and the *Production Note*.

¹ The Acrobat Reader® is available *free* for downloading at the site.

ACKNOWLEDGMENTS

My “Thanks” goes to the people who helped with the print and the web edition of *City Facts*:

Ira Blumenreich, Fiscal Planning, for providing the tax-levy financial data.

Zeev Dagan, Provost, for making *CITY FACTS* possible and for being here for CCNY.

Richard Iannacone, Associate Registrar, for his cheerful responses to my questions about the arcane aspects of the CUNY data files and the CCNY coding.

Cheryl Littman, Manager of Institutional Research in the CUNY Office of Institutional Research and Analysis, for the IPEDS’ Revenues and Expenditures information as well as for a myriad of other information.

Regina Masterson, Research Administration Office, for the sponsored program data.

Alan Sabal, Associate Admissions Director, for his continuing help, especially with the “Domestic cases”.

Kathleen Sheridan, School of Architecture, for proofreading, questioning, suggesting (Yes, the Index was bad, it is better now.), and, as always, her unique sense of humor.

Bob Law, Computer Services, my historical data resource and walking friend.

Rodel (“No Problem”) Sena, SIMS Director, and Roberto Aguilar for their continuing help, sense of humor, and for being patience with my, too often repeated, SIMS’ questions.

Elrick (Rick) St. Clair and Jerry Plange, City's Duplicating Department, for reproducing *City Facts* paper every year. Grand!

Ellen Smiley, Acting Dean of the social Sciences, for her excellent proofreading despite a crushing workload.

Pat Stein, Affirmative Action Director, for checking the faculty data.

Barbara Tsamoudakis of the Provost's Office who got *City Facts* out to you.

Lorrie Ulfers, Financial Aid Office, for financial aid data and corrections to it.

Ed Silverman, Director
Institutional Research Office
April 2004

Commentary on *City Facts* Tables

Table 1 Total Undergraduate and Graduate Enrollment, Fall 1994-2003

- The total Fall 2003 City College of New York (CCNY) student population of 12,550 increased by 4.0% (484) students from 12,066 in Fall 2002.
- In Fall 2003, 51.7% (6,397) of all CCNY students were women.
- Men comprised 48.3% (6,003) of all CCNY students in Fall 2003.
- The percent of women in the total student population of the College increased from Fall 1995 to Fall 1998, was the same 53.9% in 1999 and 2000, decreased slightly in 2001, increased in 2002, increased again to 51.7% in Fall 2003. Nationally, the percent of the total of women in the college population increased.
- Less than half (49.3%) of all CCNY students in Fall 2003 were full-time students.
- The total number of full-time students increased by 5.5% (322) from Fall 2002 to Fall 2003.
- The total number of part-time students increased by 2.6% (162) from Fall 2002 to Fall 2003.
- The number of undergraduate students increased 3.4% (298) from Fall 2002. From Fall 1994, the semester in the last ten years in which undergraduate enrollment was at its highest, the decrease was 15.7% (2,335). The last two years reversed the downward trend of the previous eight years.
- Graduate students accounted for 28.8% (3,614) of all CCNY students. Their number increased by 5.4% (186) from Fall 2002.

Table 2 Undergraduate and Graduate Students by Ethnicity/Race, Fall 1994-2003

- In Fall 2003, CCNY's undergraduate ethnic makeup was Hispanic 35.4%, Black 31.0%, Asian 20.5%, White 12.9% and American Indian/Alaskan Native 0.1%.
- The Chronicle of Higher Education*¹ reported ethnic enrollment distributions in American colleges as White 75.1%, Black 12.3%, Hispanic 11.0% and Asian 3.6%.

¹ALMANAC Issue 2002-3, "Demographics" <http://chronicle.com/>

Table 2 Undergraduate and Graduate Students by Ethnicity/Race (continued)

- The ethnic data from the voluntary section in the CUNY admissions application show that 87.1(7,783) of CCNY's undergraduates described themselves as members of a minority group.
- Among CCNY's graduate students, 81.7 % (2,949) described themselves as members of a minority group.
- In Fall 2003, our undergraduate ethnicity percentages were Hispanic 35.4%, Black 31.0%, Asian 20.5%, White 12.9%, and American Indian/Alaskan Native 0.1%.
- Our graduate ethnicity percentages were 30.2% Hispanic, 28.6% were Black, 22.8% Asian/Pacific Islanders, 18.3% White and 0.1% American Indian/Alaskan Natives.

Table 3 First-time and Continuing Students by Ethnicity/Race and Class Level, Fall 2003

- The ethnicity/race and class level breakdown of first-time and continuing undergraduate and graduate students is presented here.

Table 4 Admitted and Registered Students, Fall 1994-2003

- In Fall 2003, 6,630 Regular Freshmen applied to CCNY; 2,400 were admitted; up 56.6% (806) from Fall 2002, of those admitted 944 registered, a 16.4% (133) increase over Fall 2002.
- In Fall 2003, 718 SEEK Freshmen applied to CCNY; 375 were admitted; of those 61.3% (230) registered, a 15.0% increase compared with Fall 2002.
- In Fall 2003, 78.8% (1,219) of the 1,547 admitted transfer students registered, a 12.2% (149) increase from Fall 2002.

Table 5 Students by Class Standing/Enrollment Status, Fall 2003

- In Fall 2003, 5,634 undergraduate students were Continuing Undergraduate Degree students.²
- There were 763 First-time degree, and 436 First-time non-degree graduate students.

²Continuing Students = Total Degree Students minus First-time + Advanced Standing + Continuing non-degree Students

Table 6 SEEK Students by Enrollment Status, Fall 1994-2003

- Of the 1,171 First-time Freshmen degree students 19.6% (231) were SEEK students, an increase of 1.4% over Fall 2002.

Table 7 Full/Part-time Students by Enrollment Status, Fall 2003

- 95.9% (1,123) First-time Freshmen were full-time, degree students.
- 63.4% (754) Advanced Standing Transfer students were full-time degree students.
- 68.8% (3,878) Continuing Undergraduate degree students were full-time degree students.
- 12.1% (92) First-time Graduate students were full-time degree students.
- 6.6% (129) Continuing Graduate degree students were full-time degree students.

Table 8 Placement Test Results, Fall 1994-2003

- The placement test results in Table 8 provide detailed information for Regular, Transfer and SEEK students. From Fall 2001, SAT and Regent's test scores at or above set criteria were accepted as passing. Starting in Fall 2000, the CUNY/ACT Basic Skills Tests (CABS) began replacing the CUNY Skills Assessment (SKAT) tests.
- In Fall 2003, 99.2% (1,117) of the Transfer students, 96.7% (896) of the Regular Freshmen, and 92.1% (211) SEEK Freshmen passed the *Reading* test .
- Fall 2003, the *Math* test pass rates were 99.8% (926) for Regular Freshmen, 98.7% (1,126) for Transfer students and 92.6% (213) for SEEK students.
- Fall 2003, the *Writing* test pass rates were 96.9% (1,111) for Transfer students, 92.6% (865) for Regular Freshmen and 79.2% (183) for SEEK students.

Table 9 Placement Test Results by Enrollment Status, Fall 2003

- The Placement Test results in Table 9 *combine* Regular and SEEK students thus presenting another view of the data in Table 4. Table 9 also provides information on Continuing and Non-degree students.³

³Ibid.

Table 10 Undergraduate and Graduate FTEs, Fall 1994-2003

- Total Fall 2003 Full-time Equivalents (8,495) were up 2.8% (228) from 8,267 in Fall 2002.⁴
- 79.1% (6,716) of the Fall 2003 FTEs were undergraduates and 20.9% (1,779) were graduate students.
- Undergraduate FTEs (67161) were up 1.0% (65) from Fall 2002 and graduate FTEs (1,779) were up 10.1% (163) from Fall 2002.

Table 11 Undergraduate and Graduate FTEs by Division/School, Fall 2003

- Information about the six undergraduate colleges and six graduate colleges and divisions' FTEs aggregated by department within division and school is here. Also the table's footnotes tell where "studies" areas (non-major) as well as Urban Legal Studies majors are located.

Table 12 Undergraduate and Graduate Degrees Awarded, 1993-94 through 2002-03

- In the 2002-2003 academic year, 2,163 degrees and certificates were awarded. This was an overall increase of 4.0% (87) from 2001-2002.
- Of all the degrees earned (2,163), women earned 59.3% (1,283), up 1.5% over the last academic year.
- The number of undergraduate degrees (1,363) increased 4.8% (63) in 2002-2003 and graduate degrees (800) increased 3.1% (14) in 2001-2002.
- Of the 1,363 Bachelors degrees awarded in 2002-2003, Blacks received 34.1% (465), Hispanics 30.7% (419), Asian/Pacific Islanders 10.9% (148), Whites 10.8% (147), Non-Resident Aliens 13.4% (182), and others 0.1% (2).⁵
- Nationally, *The Chronicle of Higher Education Almanac* reported Bachelors degrees earned by Whites 74.5% (927,357), Blacks 8.9% (111,307), Hispanics 6.3% (77,745), Asian/Pacific Islanders 6.2% (78,902), Non-Resident Aliens 3.2% (39,811), and other 0.7% (9,049).⁶

⁴An "FTE" is calculated by dividing total hours + credits by 15 for undergraduates and by 12 for graduate students.

⁵See "Data Sources (part 8)" for definition of Non-Resident Aliens.

⁶8/29/03 "Degrees Conferred by Racial and Ethnic Group, 2000-2001" p19.

Table 13 All Students by Residence and Gender, Fall 2003

- Manhattan was home to 29.2% (3,621) of our students, with Queens 21.8% (2,698), Brooklyn 18.7% (2,315), and the Bronx 17.2% (2,138) as the other major places of residence.

Table 14 Students by Native Language and Gender, Fall 2003

- Languages, excluding English, spoken by ten (10) or more students are shown in this table.

- In Fall 2003, 91 languages other than English were spoken at CCNY. The five with more than 100 speakers were Spanish (1,425), Chinese (375), Bengali (210), Korean (118) and Creole (112).

- NOTE: This information is gathered from the CUNY application form instituted in Fall 1992. To receive the complete list of languages, please send a written request to the CCNY Office of Institutional Research (A218J), 160 Convent Avenue, NY, NY 10031 or an email to esilverman@ccny.cuny.edu

Table 15 Students by Country of Birth and Gender as of Fall 2003

- Countries, excluding the USA, from which ten (10) or more students come are shown in this table.

- In Fall 2003, CCNY students came from 147 countries besides the United States. The seven with more than 100 students were the Dominican Republic (368), Jamaica (192), China and Bangladesh (150 each), Trinidad and Tobago (117), Haiti (113), and Columbia (111).

- To receive the complete list of the countries, see the information in Table 14 above.

Table 16 Undergraduate Enrollment, Fall 1994-2003

- Of the 8,838 undergraduates, 66.9% (5,915) were full-time students, 33.1% (2,923) were part-time and 4.4% (389) were non-degree students.

- In Fall 2003, women accounted for 49.0% (4,331) of the undergraduates, a decrease of 2.3% (101) from Fall 2002.

- From Fall 2003, full-time students increased by 6.3% (318), part-time students decreased by 3.9% (118), degree students increased by 3.7% (311), and the number of SEEK students decreased by 3.3% (29).

Table 17 Undergraduate Students by Class Status, Fall 1994-2003

- Overall, from Fall 1997 the undergraduate degree student enrollment increased to its seven-year high in Fall 2003.
- In Fall 2003, the number of Freshmen increased to 3,141. Sophomore numbers increased to 1,836. The number of Juniors increased. The number of Seniors reversed its upward trend and decreased by 4.1 (84).

Table 18 Undergraduate Enrollment by Lower/Upper Division and Full/Part-time, Fall 1994-2003

- The decrease from Fall 1994 to Fall 1999 in the total number (full/part-time) of lower-division undergraduate students reversed in Fall 2000, continued up again until Fall 2003 when it reached a nine-year high.
- The upper-division numbers moved downward from Fall 1995 to Fall 2000's ten-year low. From Fall 2001, they increased to a seven-year high in Fall 2003.

Table 19 Undergraduate FTEs by Class Status, Fall 1994-2003

- From Fall 2001 to Fall 2003, the total number of Undergraduate FTEs increased 13.4% (808) from 6,037 to 6,845, reflecting the overall increase in undergraduates.

Table 20 Degree Seeking Juniors/Seniors by Division/School, Fall 1999-2003

- Engineering was consistently the most popular undergraduate degree choice from Fall 1999 through Fall 2003.
- In Fall 2003, Humanities and Arts was second, Social Sciences third, and the Center for Worker Education (CWE) was fourth.
- The School of Engineering enrollment was 25.9% (919) of the total number of CCNY undergraduate Juniors/Seniors who declared a major.
- In Fall 2003, 8.3% (319) of all undergraduate Juniors/Seniors had not declared a major. This was a decrease from Fall 1999 and Fall 2000's five-year high. Since these data were collected in the third week of the semester, a percentage of the upper-division students had not completed the formal process of declaring a major. As a result, the numbers of majors in several curricula are likely to increase by the end of the term and the proportion of "undeclared" students should decline.

Table 21 Undergraduates: U.S. Citizens and Non-Resident Aliens by Ethnicity/Race, Full/Part-time Status and Gender, Fall 2003

●In Fall 2003, Non-Resident Aliens comprised 9.3% (824) of our total undergraduate population (8,838).⁷

●Nationally, *The Chronicle of Higher Education Almanac* reported ethnic enrollment distributions in American colleges in 2000 showed "Foreign" students were 4.3% of the total number of undergraduate students in American Public 4-year colleges.⁸

●Also see Table 32 for graduate and Table 33 for graduate and undergraduate Non-Resident Aliens, Fall 1999-2003.

Table 22 Undergraduate Areas of Study by Ethnicity/Race and Gender, Fall 2003

●This table presents detailed information about the ethnicity/race and gender for all undergraduate students by areas of study. CCNY students are not required to declare a major until they reach their Junior year, hence the large number of “undeclared” majors.

●Women comprised 82.9% (609) of the Center for Worker Education (CWE), 82.7% (305) of the Education, 65.4% (443) of the Social Sciences, 59.1% (582) of the Sciences, 58.0% (225) of the BioMed majors, 51.0% (495) of the Humanities & Arts majors, 37.6% (228) of the students in Architecture, and 19.8% (447) of the Engineering majors.

●54.3% (1,037) of CCNY’s undergraduates who did not declare a major are women.

Table 23 Undergraduates by Major, 1999-2003

●This table shows enrollment in undergraduate majors for five years. In Spring 2000, CCNY converted to the CUNY SIMS system. The CCNY majors were re-coded. In Fall 2003, new Education majors’ codes were created. The changes are indicated.

Table 24 Undergraduate Degrees Awarded by Division/School, 1993-94 through 2002-03

●In Fall 2003, the largest number of degrees awarded was in Social Science (322); Humanities & Arts (299) was second; Engineering third (214), the Center for Worker Education (CWE) fourth (210), and Architecture fifth (119).

Table 25 Bachelor Degrees by Major, 1999-2003

⁷See “Data Sources (part 8”) for the definition of Non-Resident Aliens.

⁸8/29/03 "College Enrollment by Racial and Ethnic Group, Selected Years 1980-2000" p.15 or <http://chronicle.merit.edu>.

●This table shows undergraduate degrees granted by major for the last five years. In Spring 2000, CCNY converted to the CUNY SIMS system. The CCNY majors were re-coded. In Fall 2003, new Education majors' codes were created. The changes are indicated.

Table 26 Freshmen: High Schools of Origin, Fall 2003

- Twenty-six high schools contributed ten or more Freshmen to CCNY.
- 6.6% (77) of our Freshmen came from foreign schools.
- 2.2% (26) were General Equivalency Degree (GED) students.⁹
- 3.5% (41) came from states other than New York State.

Table 27 New Freshmen and All Undergraduates by Age and Gender, Fall 2003

- The *median* age was 18.¹⁰
- The *mode* age for Fall 2003 new Freshmen was also 18.¹¹
- 11.4% (134) of the new Freshmen were 19 years old or younger.
- 19.7% (1,756) of all CCNY Undergraduates were 19 years old or younger.

Table 28 SAT Scores for First-time Regular and SEEK Freshmen, Fall 2003

- Fall 2003 was the first time CCNY required SAT tests for its entering Freshmen.
- 39.8% (408) of all Freshmen for whom we have SAT results scored a total of 1000 or higher on their combined verbal and math tests.
- Of the 815 regular students for whom we have SAT results, 46.0% scored 1000 or higher on their combined verbal and math tests.

Table 28 SAT Scores for First-time Regular and SEEK Freshmen, Fall

⁹General Equivalency Degree (GED) is a high school degree earned by a test.

¹⁰The *median* is the mid-point of a group with the same number above and below it.

¹¹The *mode* is the number that appears most frequently.

2003 (continued)

- 15.6% of the 211 SEEK students for whom we have SAT results scored 1000 or higher on their combined verbal and math tests.
- The mean total (math and verbal) SAT score for regular students was 1005. The highest individual score was 1540 and the lowest 520.¹²
- The SEEK students' mean total (math and verbal) SAT score was 841. The highest individual score was 1290 and the lowest 490.⁹

Table 29 Total SAT Scores for First-time Regular and SEEK Freshmen by Division, Fall 2003

- Engineering had the largest number of first-time, regular Freshmen with total SAT scores of 1000 or above. The mean total (math and verbal) SAT score for Engineering was 1016.
- 35.2% (69) of the undeclared regular Freshmen had total (math and verbal) SAT scores of 1000 or above. The mean total (math and verbal) SAT score for this group was 943.
- The highest total (math and verbal) mean SAT score by division for a regular student (N >10) was in BioMed (1540) and for SEEK it was in Engineering (1290).
- According to the New York-based College Board, the association that administers the SAT, the 1.4 million SAT takers in the Class of 2003 earned average scores of 519 on the math portion of the test and 507 on the verbal section, for a total SAT score of 1026.

¹²1600 is the highest possible total SAT score and 400 is the lowest.

Table 30 Graduate Enrollment, Fall 1994-2003

- The total number of graduate (Masters and Advanced Certificate) students increased 5.4% (186) from Fall 2002 to Fall 2003.
- Of the 3,614 graduate students registered in Fall 2003, 6.5% (234) were full-time and 93.5% (3,380) were part-time.
- Women comprised the majority, 58.0% (2,097), of the Fall 2003 graduate student population.
- Part-time graduate students increased by 7.0% (220) from Fall 2002 to Fall 2003.
- Full-time graduate student enrollment (234) in Fall 2003 decreased 12.7% (34) from Fall 2002.

Table 31 Graduate Students by Division/School, Fall 1999-2003

- A recoding of majors in Spring 2000 and the creation of Humanities & Arts, a new division, changed Graduate enrollment reported in Fall 2000.
- In Fall 2003, the increase in graduate enrollment is primarily due to an increase in our School of Education's NYC Teaching Fellows and non-degree students.

Table 32 Graduate Students: U.S. Citizens and Non-Resident Aliens by Ethnicity/Race, Full/Part-time Status and Gender, Fall 2003

- In Fall 2003, Non-Resident Aliens comprised 13.2% (477) of the total graduate student population (3,614).¹³
- 44.2% (211) of the Non-Resident Citizens Aliens and 60.0% (1,882) of the U.S. citizens were women.

¹³See "Data Sources (part 8)" for a definition of Non-Resident Aliens.

Table 33 Graduate and Undergraduate Students: U.S. Citizens and Non-Resident Aliens, Fall 1999-2003

- Undergraduate Non-Resident Alien student numbers increased from Fall 2002 to Fall 2003 by 30.9% (302), the largest increase in three years, regardless of the new immigration law restrictions.
- From Fall 2002 to Fall 2003, graduate Non-Resident Alien student numbers increased by 9.0% (43).

Table 34 Masters Degrees and Advanced Certificates Awarded by Division/School, 1993-94 through 2002-03

- For the academic year (Summer 2002, Fall 2002 and Spring 2003), 800 graduate degrees were granted, an increase of 3.0% (24) from the previous academic year.
- 54.8% (438) of the graduate degrees granted were in Education, 21.3% (170) were in Engineering, 10.4% (83) in the Humanities & Arts, 9.3% (74) in the Social Sciences, 2.9% (23) in the Sciences, and 1.5% (12) in Architecture.

Table 35 Graduate (Masters and Certificate) Students by Major, Fall 1999-2003

- This table shows enrollment in graduate majors for five years. In Spring 2000, CCNY converted to the CUNY SIMS system. The CCNY majors were re-coded. In Fall 2003, new Education majors' codes were created. The changes are indicated.

Table 36 Graduate (Masters and Certificate) Degrees by Major, 1999-2003

- This table shows graduate degrees by major for the last five years. The number(s) following the major is/are its CCNY code(s). In Spring 2000, CCNY converted to the CUNY SIMS system. The CCNY majors were re-coded. In Fall 2003, new Education majors' codes were created. The changes are indicated.

Table 37 Graduate Students Areas of Study by Gender and Ethnicity/Race, Fall 2003

- Women accounted for 68.2% (1,479) of the Education, 59.4% (184) of the Social Sciences, 56.3% (187) of the Humanities & Arts, 55.3% (99) of the CLAS non-matriculated students, 41.5% (39) of the Sciences, 31.6% (6) of the Architecture, and 19.4% (89) of the Engineering majors.

Table 38 New and All Graduate Students by Age and Gender, Fall 2003

- The *median* and the *mode* ages for Fall 2003 entering graduate students were 27 and 23 respectively. For all graduate students, the *median* was 31 and the *mode* 27. For new graduate students, the *median* and the *mode* decreased from Fall 2002 and for all graduate students the mean remained the same, but the mode decreased.¹⁴

Table 39 Transfer Students by Type of Feeder Institution, Fall 1994-2003

- From Fall 2002 to Fall 2003, the total number of transfer students increased by 14.8% (158) from 1,070 to 1,228.
- In Fall 2003, transfer student numbers from non-CUNY 4-Year institutions increased by 30.8% (78) to 253 from Fall 2002's ten-year high of 253.
- From Fall 2002 to Fall 2003, the number of students entering CCNY from CUNY 2-Year *with* a degree increased 63.6% (56) from 88 to 144.
- The number of students *without* a degree decreased by 8.0% (8) to 205 from 197.
- From Fall 2002 to Fall 2003 the number of students from foreign colleges increased by 27.6% (from 127 to 162).

Table 40 Transfer Students by Feeder Colleges, Fall 2003

- Postsecondary institutions contributing more than 20 transfer students were: Borough of Manhattan Community College (150), LaGuardia Community College (53), Bronx Community College (46), Hunter and New York City Technical College (44 each), Queensboro Community College (37), Kingsboro Community College (29), Hostos Community College (28), and Baruch (23)
- Foreign colleges accounted for 8.6% (105) of our transfer students.

Table 41 Transfer Students by Area of Study by Ethnicity/Race and Gender, Fall 2003

- 49.0% (602) of all (1,228) transfer students were women.
- 81.0% (94) of the transfer students at the Center for Worker Education (CWE) were women.

¹⁴The *median* is the mid-point of a group with the same number above and below it. The *mode* is the number that appears most frequently.

Table 42 New and All Transfer Students by Age and Gender, Fall 2003

- The *median* and *mode* ages for Fall 2003 Transfer students were 24 and 21 respectively.¹⁵

Table 43 Gender and Ethnicity/Race of Faculty and Staff, 07/01/02-06/30/03

- Of tenured, *male*, full-time faculty 84.6% (181) were White, 12.6% (27) were Black, 9.3% (20) were Asian, 5.1% (11) were Hispanic, 1 was a Non-Resident Alien and 1 was a Native American.

- Of tenured, *female*, full-time faculty 66.3% (65) were White, 18.4% (18) were Black, 9.2% (9) were Hispanic, and 6.1% (6) were Asian.

- From 7/1/99-6/30/00 to 7/1/02-6/30/03, the total number of tenured, full-time faculty dropped 9.1% (34).

- In 7/1/02-6/30/03, part-time faculty comprised 48.9% (468) of the College's faculty. Since 7/1/99-6/30/00, the total number of part-time faculty increased by 34.7% (162).

- The total full- and part-time faculty count in 7/1/02-6/30/03 (946) was up 1.3% (12) from 7/1/01-6/30/02 (946) due to an increase in part-time faculty.

- The ratio of all faculty (958) to students (12,550) was 1 to 13.1.

- The highest degrees earned by regular, full-time faculty are: 86.3% Ph.D. or terminal degree, 12.0% Masters, and 1.5% Bachelors degrees.

- In 7/1/02-6/30/03, the ratio of administrators (216) to students was 1 to 58.1. Since 7/1/99-6/30/00, the total number of administrators increased by 1.9% (4).

- Since 7/1/99-6/30/00, the total number of service staff increased by 0.8% (3).

Table 44 Faculty by Department, 07/01/02-06/30/03

- This table breaks out faculty by type within a department. Math (21), BioMed, English and Physics (each with 16), Psychology (15), Architecture, Chemistry and Electrical Engineering (each with 13) have the most full professors.

- English (61) is the department with most adjuncts, followed by CWE (51), BioMed (45), Early Childhood Education (38), Art and Architecture (each with 39).

¹⁵Ibid.

Table 45 Financial Aid 2003-2004

- Financial aid to students in 2003-2004 totaled \$43,683,000.
- Approximately 70% of CCNY undergraduates receive financial aid.
- Awards are not cash-in-hand until students are certified as eligible. Certification is done each semester, so this total number and amounts of awards may change.
- Tuition more than tripled from \$1,250 to \$4,000 in Fall 1991 to Fall 2003. During the same period, the loans CCNY students took out to pay tuition and other expenses increased over 23.5 times to \$43,683,000 from \$1,838,000.
- CCNY student's overall default rate on federal loans has been dropping for the last decade. In Fall 2002, it was 3.2%.
- 58% of CCNY undergraduates' household incomes are below \$25,000 per year.¹⁶

Table 46 Financial Aid 1998-99 to 2003-2004

- The total number of awards from 1999-2000 to 2003-2004 decreased 3.1% (559).
- From 2002-2003 to 2003-2004 the total number of awards increased 13.4% (2,097), and the dollar amount increased by 23.2% (\$8,215,000).

Table 47 Tax-Levy Operating Budget, 2003-2004

- The operating budget for the 2002-2003 academic year shows the four largest expenditures were Instruction 42.6% (\$40,136), Instructional Support % 11.1(\$10,406), BioMed 9.9% (\$9,317), and Maintenance/Operations 9.5% (\$8,962).
- The reported Instruction expenses in the 2003-2004 are 20% (\$6,684,000) higher than in 2002-2003. The reported Instructional Support expenses in the 2003-2004 are -23.4% (-\$3,187,600) lower than in 2002-2003.

Table 48 Revenues and Expenditures, 2002-2003

- Information in this table is in the Integrated Postsecondary Education Data System (IPEDS) report format required by the federal government for comparison of public and private institutions.

¹⁶*CUNY Student Data Book: Fall 1997, Volume I, Table 49, p.170.*

Table 48 Revenues and Expenditures, 2002-2003 (continued)

●In the fiscal year 2002-2003, CUNY implemented the Governmental Accounting Standards Board (GASB) Statements 34 and 35 which required that tuition and fee revenues be reported net of any scholarship discounts and allowances rather than gross (as in previous years). The GASB also required a reduction in the amount of scholarship and fellowship expense to be reported.

Table 49 Total Revenues and Expenditures, 1998-1999 through 2002-03

- This five-year table of revenues and expenditures is for comparison purposes.
- Starting in the 2000-01 academic year, Tax-levy and Research Foundation (non-Tax-levy) funds were combined.
- In 2002-2003, total current revenues were 4.3% (\$7,846,124) more than in 2000-2001 - CCNY took in \$7,846,124 than it spent. The increase in revenues was due to increases in Tuition and Fees, Federal, State Government, Local Private Grants and Contracts, and Research Foundation (non-Tax-levy) funds.

Table 50 Sponsored Programs, 2002-2003

- The Sponsored Programs 2002-2003 total (\$46,893,090) is a 32.1% (\$11,382,933) increase from 2001-2002.
- Funding or support from the National Science Foundation and the National Institute of Health accounted for 41.0% (\$19,245,119) of the 2002-2003.
- Programs sponsored by corporations or foundations accounted for 9.6% (\$4,520,911).
- New York City and State Agencies accounted for 19.3% (\$9,053,052) and 8.6% (\$4,031,735) respectively.

Table 51 Sponsored Programs, 1998-99 through 2002-03

●The National Institute of Health, the National Aeronautics and Space Administration, the Departments of Defense, Education, New York State and City all increased from 2001-2002 to 2002-2003.

Table 1: Total Undergraduate and Graduate¹ Enrollment, Fall 1994-2003

	1994	1995	1996	1997	1998	1999	2000	2001	2002	2003
Full-time	8,279	7,533	6,745	6,354	6,179	5,660	5,438	5,254	5,865	6,187
	55.6%	53.2%	53.9%	52.5%	51.5%	51.5%	48.8%	50.1%	48.6%	49.3%
Part-time²	6,606	6,624	5,761	5,739	5,822	5,337	5,620	5,229	6,201	6,363
	44.4%	46.8%	46.1%	47.5%	48.5%	48.5%	50.5%	49.9%	51.4%	50.7%
Women	7,348	7,316	6,533	6,474	6,575	5,932	6,005	5,554	6,478	6,488
	49.4%	51.7%	52.2%	53.5%	54.8%	53.9%	53.9%	53.0%	53.7%	51.7%
Men	7,537	6,841	5,973	5,619	5,426	5,065	5,131	4,929	5,588	6,062
	50.6%	48.3%	47.8%	46.5%	45.2%	46.1%	46.1%	47.0%	46.3%	48.3%
Undergraduate	11,526	10,686	9,620	9,062	8,935	8,350	8,232	8,067	8,638	8,936
	77.4%	75.5%	76.9%	74.9%	74.5%	75.9%	73.9%	77.0%	71.6%	71.2%
Graduate	3,359	3,471	2,886	3,031	3,066	2,647	2,904	2,416	3,428	3,614
	22.6%	24.5%	23.1%	25.1%	25.5%	24.1%	26.1%	23.0%	28.4%	28.8%
Total³	14,885	14,157	12,506	12,093	12,001	10,997	11,136	10,483	12,066	12,550

¹"Graduate" in *City Facts* means "Masters" and "Advanced Certificate" degree students. Although Ph.D. students are taught at the College, the CUNY Graduate Center keeps their records and is credited with their degrees.

²Starting in Fall 1998, Westchester Part-time Graduate Education students are included.

³These total numbers include "permit" students (undergraduate and Masters) from other CUNY colleges and "CUNY BA" students.

Sources: Fall, 1994-2003; CUNY Show Tapes (electronic data files)

Graph 1: Undergraduate and Graduate Enrollment, Fall 1994-2003

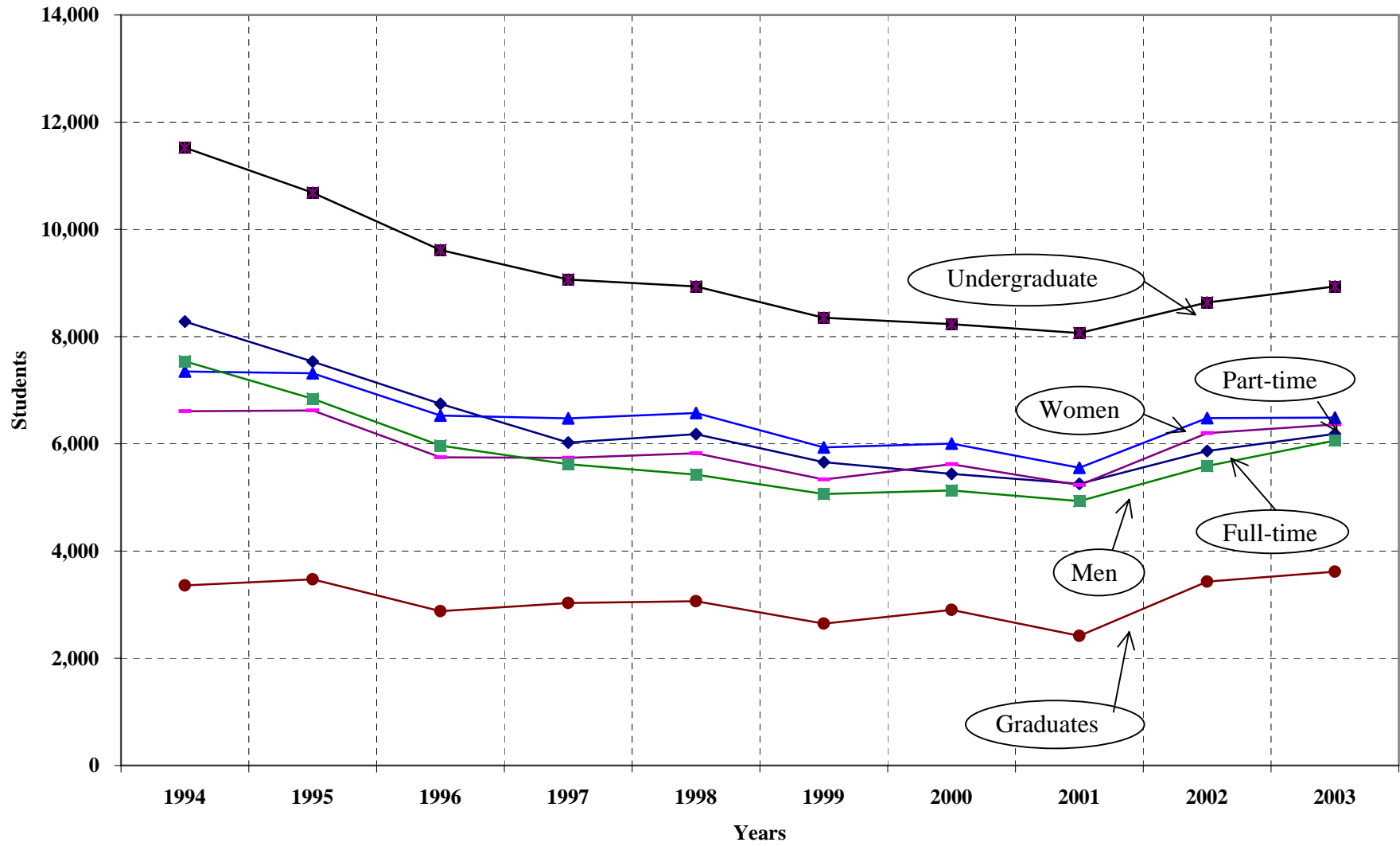


Table 2: Undergraduate and Graduate Students by Ethnicity/Race, Fall 1994-2003

UNDERGRADUATES	1994	1995	1996	1997	1998	1999	2000	2001	2002	2003
American Indian or Alaskan Native	0.3%	0.3%	0.2%	0.3%	0.3%	0.3%	0.3%	0.3%	0.2%	0.1%
Asian-Pacific Islander	16.0%	15.7%	15.4%	15.2%	15.0%	14.6%	13.8%	13.5%	19.0%	20.5%
Black	39.5%	38.2%	38.3%	37.2%	37.1%	36.5%	32.4%	29.6%	33.2%	31.0%
Hispanic	25.2%	26.9%	28.2%	29.4%	31.4%	30.2%	27.7%	26.0%	34.6%	35.4%
Puerto Rican ¹	3.3%	3.3%	2.8%	2.4%						
White	11.1%	11.4%	10.2%	9.8%	9.8%	9.8%	9.0%	8.7%	13.0%	12.9%
No Response	4.7%	4.3%	4.9%	5.7%	6.4%	8.7%	16.9%	22.0%		
Total:	11,526	10,686	9,616	9,062	8,930	8,349	8,232	8,067	8,638	8,936

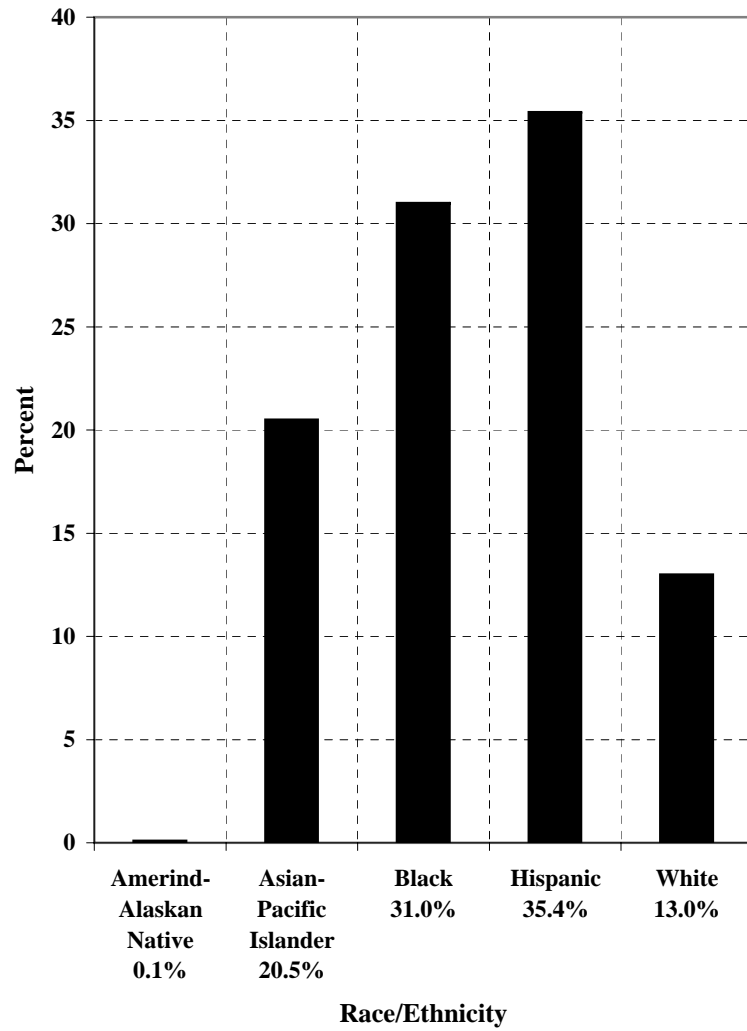
GRADUATES ²	1994	1995	1996	1997	1998	1999	2000	2001	2002	2003
American Indian or Alaskan Native	0.3%	0.4%	0.3%	0.2%	0.3%	0.3%	0.2%	0.2%	0.1%	0.1%
Asian-Pacific Islander	16.6%	15.6%	14.9%	15.3%	14.7%	15.1%	8.4%	10.1%	22.4%	22.8%
Black	25.7%	27.1%	27.0%	27.7%	27.1%	23.7%	17.6%	21.2%	28.6%	28.6%
Hispanic	19.4%	22.2%	24.0%	23.3%	24.6%	20.7%	13.5%	16.3%	29.7%	30.2%
Puerto Rican ¹	4.3%	4.6%	4.9%	5.5%						
White	18.0%	17.3%	17.5%	15.5%	16.3%	15.2%	8.8%	10.6%	19.1%	18.3%
No Response	15.7%	12.8%	11.3%	12.4%	17.1%	24.9%	51.5%	62.0%		
Total:	3,359	3,471	2,878	3,031	3,066	2,647	2,904	2,416	3,427	3,614

¹ In Fall 1992, CUNY stopped using the "Puerto Rican" ethnic category choice on their CUNY application form, the source of this data; hence, the decline in this category from 1992. (Category deleted here in 1998.)

² Starting in Fall 1998, Westchester Part-time Graduate Education students are included.

Sources: Fall, 1994-2003; CUNY Show Tapes (electronic data files)

Graph 2a: Undergraduates' Race/Ethnicity, Fall 2003



Graph 2b: Graduate Students' Race/Ethnicity, Fall 2003

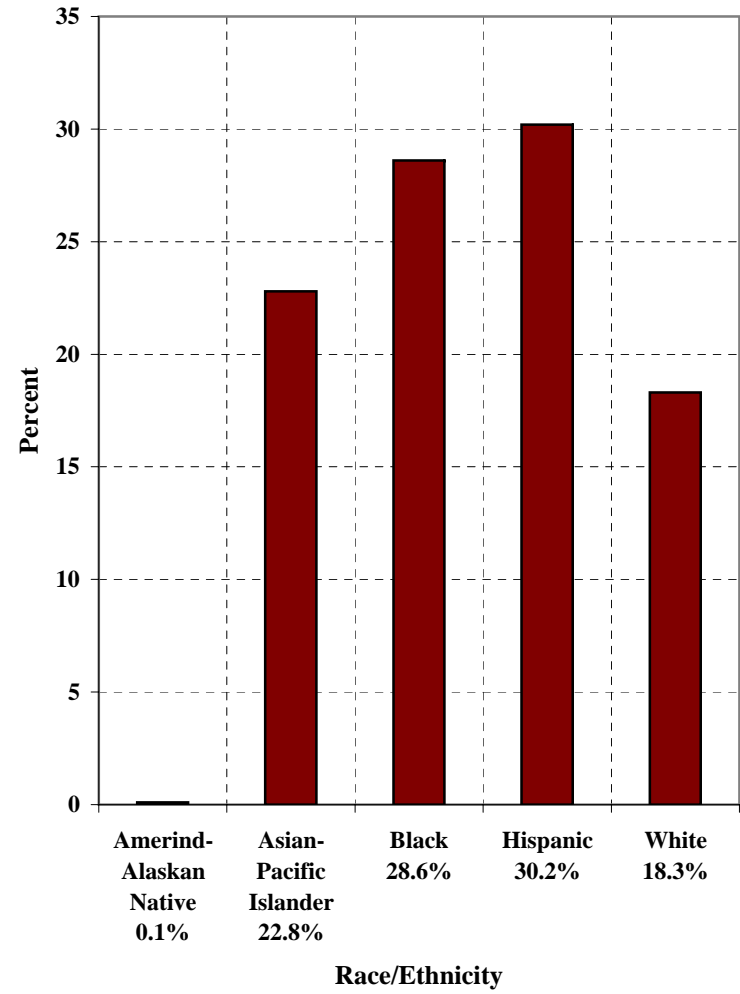


Table 3: First-time and Continuing Students by Race/Ethnicity and Class Level, Fall 2003¹

	White		Black		Hispanic ³		Asian		American Indian		Total
1. First-time Freshman Degree	115	9.8%	296	25.3%	472	40.3%	287	24.5%	1	0.1%	1,171
2. College Now ²			3	42.9%	3	42.9%	1	14.3%			7
3. Undergraduate Advanced Standing Transfer	246	20.0%	323	26.3%	429	34.9%	227	18.5%	3	0.2%	1,228
4. Undergraduate Non-Degree Re-admit	3	11.1%	13	48.1%	4	14.8%	7	0.6%			27
5. Undergraduate Degree Re-admit	42	9.7%	166	38.4%	177	41.0%	46	10.6%	1	0.2%	432
6. Undergraduate First-time Non-Degree	45	17.3%	83	31.9%	88	33.8%	44	16.9%			260
7. Undergraduate Permit-in	10	14.3%	23	32.9%	24	34.3%	13	18.6%			70
8. Undergraduate Continuing Degree	682	12.1%	1,820	32.3%	1,941	34.5%	1,185	21.0%	6	0.1%	5,634
9. Undergraduate Continuing Non-Degree	13	12.1%	42	39.3%	28	26.2%	24	22.4%			107
<hr/>											
1. Graduate First-time Degree	189	24.8%	173	22.7%	187	24.5%	214	28.0%			763
2. Graduate Advanced Standing Transfer	5	23.8%	10	47.6%	2	9.5%	4	19.0%			21
3. Graduate Degree Re-admit	22	18.0%	56	45.9%	33	27.0%	11	9.0%			122
4. Graduate Non-Degree Re-admit	4	6.8%	21	35.6%	22	37.3%	12	20.3%			59
5. Graduate First-time Non-Degree	85	19.5%	129	29.6%	127	29.1%	95	21.8%			436
6. Graduate Permit-in	2	25.0%	2	25.0%	3	0.7%	1	0.2%			8
7. Graduate Continuing Non-Degree	31	13.0%	77	32.4%	95	39.9%	34	14.3%	1	0.4%	238
8. Graduate Continuing Students ⁴	322	16.4%	566	28.8%	623	31.7%	453	23.0%	3	0.2%	1,967
Total	1,816	14.5%	3,803	30.3%	4,258	33.9%	2,658	21.2%	15	0.1%	12,550

¹Includes SEEK and "permit" students (undergraduate and Masters) from other CUNY colleges and "CUNY BA" students.

²A collaborative program between the NYC Board of Education and CUNY that helps students become ready for college work.

³Includes Puerto Ricans.

⁴Tuition wavier graduate education students are excluded.

Source: Fall, 2003; CUNY Show Tape (electronic data file).

Table 4a: Admitted and Registered Students, Fall 1994-2003

FRESHMEN	1994	1995	1996	1997	1998	1999	2000	2001	2002	2003
Regular(R)										
Admitted	1,814	1,652	1,370	1,668	1,395	1,275	1,465	1,464	1,594	2,400
Registered	849	781	656	736	674	563	648	578	811	944
SEEK (S)										
Admitted	850	337	379	659	798	644	836	930	390	375
Registered	394	158	168	287	293	264	280	157	200	230
Total Admit'd R&S	2,664	1,989	1,749	2,327	2,193	1,919	2,301	2,394	1,984	2,775
Total Regist'd R&S	1,243	939	824	1,023	967	827	928	735	1,011	1,174
TRANSFERS¹										
Admitted	1,364	1,468	1,060	1,230	1,159	1,108	1,192	980	1,224	1,547
Registered	832	866	742	782	953	858	798	859	1,070	1,219

Table 4b: Show Rates² of Admitted Students, Fall 1993-2002

FRESHMEN	1994	1995	1996	1997	1998	1999	2000	2001	2002	2003
Regular	46.8%	47.3%	47.9%	44.1%	48.3%	44.2%	44.2%	39.5%	50.9%	39.3%
Seek	46.4%	46.9%	44.3%	43.6%	36.7%	41.0%	33.5%	16.9%	51.3%	61.3%
Total R&S	46.7%	47.2%	47.1%	44.0%	44.1%	43.1%	40.3%	30.7%	51.0%	42.3%
TRANSFERS										
	61.0%	59.0%	70.0%	63.6%	82.2%	77.4%	66.9%	87.7%	87.4%	78.8%

¹From 1989, CWE transfer applicants were reported to UPAC for processing, thus increasing CCNY's transfer student admitted count.

In Fall 1994, due to a new processing system, transfer allocations were delayed. NOTE: Correction for "admitted".

²The "Show Rate" is the actual number of students who registered.

Sources: 1994-2002 Admissions Office from Student Status and Class Level University Application Processing Center (UAPC)

Fall 2003 CAS (Freshman) Tape (CAS.fa03.C01F03AL) and the ASTA (Transfer) Tape (ASTA.f03.C01F03AL)

Fall, 1994-2003 CUNY Show Tapes (electronic data files)

Table 5: Students by Class Standing and Enrollment Status, Fall 2003¹

	Freshmen	Sophomores	Juniors	Seniors	Graduate	Total
1. First-time Freshmen Degree	1,171					1,171
2. Undergraduate Advanced Standing Transfer	423	341	336	89		1,189
3. College Now ²	7					7
4. Undergraduate Degree Re-admit	98	105	107	122		432
5. Undergraduate Non-Degree Re-admit	27					27
6. Undergraduate First-time Non-Degree	260					260
7. Undergraduate Permit-in	70					70
8. Undergraduate Continuing Degree ³	1,005	1,405	1,473	1,751		5,634
9. Undergraduate Continuing Non-Degree	99	8				107
10. Undergraduate Internal Transfer ⁴	22	7	7	3		39
<hr/>						
1. Graduate First-time Degree					763	763
2. Graduate Degree Re-admit					122	122
3. Graduate Non-Degree Re-admit					59	59
4. Graduate First-time Non-Degree					436	436
5. Graduate Permit-in					8	8
6. Graduate Continuing Non-Degree					238	238
7. Graduate Continuing Students					1,967	1,967
8. Graduate Internal Transfer					21	21

¹Includes SEEK and "permit" students (undergraduate and Masters) from other CUNY colleges and "CUNY BA" students.

²A collaborative program between the NYC Board of Education and CUNY that helps students become ready for college work.

³Continuing Students = Total degree students minus (first-time degree + advanced standing transfer + continuing non-degree + re-admitted students)

⁴An "Internal transfer" is a non-degree student who becomes a degree-seeking student.

Source: Fall, 2003; CUNY Show Tape (electronic data file)

The City College of New York Office of Institutional Research

Table 6: SEEK Students by Enrollment Status, Fall 1994 - 2003

	1994	1995	1996	1997	1998	1999	2000	2001	2002	2003
First-time Freshman Degree Students	394	158	168	287	293	264	280	157	200	231
Advanced Standing Transfer Students	25	22	24	25	25	20	17	15	28	26
Re-admitted Students	57	46	40	30	36	35	37	38	43	33
Continuing Undergraduate Degree Students ¹	1,195	1,036	775	637	634	625	609	646	595	552
Total	1,671	1,262	1,007	979	988	944	943	856	866	842

¹Continuing Students = Total degree students minus (first-time degree + advanced standing transfer + continuing non-degree + re-admitted students).

Source: Fall 1994 to Fall 2003; CUNY Show Tapes (electronic data files)

Table 7: Full/Part-time Students by Enrollment Status, Fall 2003¹

	Full Time		Part Time		Total
1. First-Time Freshman Degree	1,123	95.9%	48	4.1%	1,171
2. Undergraduate Advanced Standing Transfer	754	63.4%	435	36.6%	1,189
3. College Now ²			7	36.6%	7
4. Undergraduate Degree Re-admit	126	29.2%	306	70.8%	432
5. Undergraduate Non-degree Re-admit	2	29.2%	25	70.8%	27
6. Undergraduate Continuing Degree ³	3,878	68.8%	1,756	31.2%	5,634
7. Undergraduate First-time Non-Degree	36	13.8%	224	86.2%	260
8. Undergraduate Continuing Non-Degree	10	9.3%	97	90.7%	107
9. Undergraduate Permit-in	1	1.4%	69	98.6%	70
10. Undergraduate Internal Transfer ⁴	23	59.0%	16	41.0%	39
<hr/>					
1. Graduate First-Time Degree	92	12.1%	671	87.9%	763
2. Graduate Degree Re-admit	3	2.5%	119	97.5%	122
3. Graduate Non-Degree Re-admit	1	1.7%	58	98.3%	59
4. Graduate First-Time Non-Degree	4	4.0%	432	99.1%	436
5. Graduate Permit-in			8	100.0%	8
6. Graduate Continuing non-Degree	1	0.4%	237	99.6%	238
7. Graduate Continuing ³	129	6.6%	1,838	93.4%	1,967
8. Graduate Internal Transfer ⁴	4	19.0%	17	81.0%	21

¹Includes SEEK and "permit" students (undergraduate and Masters) from other CUNY colleges and "CUNY BA" students.

²A collaborative program between the NYC Board of Education and CUNY that helps students become ready for college work.

³Continuing Students = Total degree students minus (first-time degree + advanced standing transfer + continuing non-degree + re-admitted students)

⁴An "Internal transfer" is a non-degree student who becomes a degree-seeking student.

Table 8: Placement Test Results, Fall 1994-2003¹⁻⁵

MATRICULATED FRESHMEN		1994	1995	1996	1997	1998	1999	2000	2001	2002	2003
Reading % Passed		61.1%	63.3%	66.0%	71.8%	79.6%	76.4%	86.3%	95.8%	95.9%	96.7%
Total N:		795	687	550	662	597	276	634	578	784	927
Writing % Passed		44.4%	57.4%	47.8%	48.2%	57.7%	57.9%	71.1%	92.7%	93.0%	92.6%
Total N:		784	662	546	651	594	261	634	578	781	934
Math % Passed		79.0%	78.4%	84.4%	86.2%	89.1%	91.2%	89.9%	98.3%	100.0%	99.8%
Total N:		794	690	544	659	580	441	632	578	792	928
MATRICULATED SEEK FRESHMEN		1994	1995	1996	1997	1998	1999	2000	2001	2002	2003
Reading % Passed		38.6%	37.7%	50.6%	60.5%	65.1%	52.1%	77.2%	92.4%	91.8%	92.1%
Total N:		383	151	162	276	289	169	276	157	196	229
Writing % Passed		24.7%	39.6%	24.7%	21.1%	38.3%	22.0%	48.7%	70.7%	84.0%	79.2%
Total N:		380	149	158	266	290	141	277	157	200	231
Math % Passed		45.3%	47.0%	63.8%	66.2%	69.5%	62.2%	82.6%	91.1%	96.5%	92.6%
Total N:		382	151	160	272	279	196	264	157	198	230
TRANSFERS		1994	1995	1996	1997	1998	1999	2000	2001	2002	2003
Reading % Passed		77.4%	75.5%	80.4%	88.1%	85.4%	89.1%	94.6%	78.7%	98.0%	99.2%
Total N:		709	739	623	695	694	516	709	859	835	1,126
Writing % Passed		69.7%	76.6%	74.6%	83.4%	77.4%	81.9%	92.5%	77.6%	97.8%	96.9%
Total N:		706	738	613	692	694	492	705	859	858	1,146
Math % Passed		72.8%	78.0%	80.7%	89.6%	89.7%	89.6%	92.8%	81.7%	96.6%	98.7%
Total N:		718	740	621	693	697	567	713	859	851	1,141

¹a) A new reading examination, more difficult than previous ones, was first given in 1994.

b) The total (N) number of students who took a test at CCNY. It does not include scores transferred from other schools or missing scores.

To get the number who passed, multiply total N by % passed (e.g., 2001 Freshmen (Non-SEEK)

Reading: $578 \times 95.8\% = 554$

²Starting in Fall 2000, The CUNY/ACT Basic Skills Tests (CABS) began replacing the SKATs. "Passed" includes "Exempt" in Reading and Writing, and "Certified" in Math.

³Starting in Fall 2001, "Passed" includes "Exempt", "Regents" and "SAT" in Reading, Writing, and Math.

⁴Starting in Fall 2001, Reading, Writing, and Math "Transfers" include SEEK transfer students.

⁵Starting in Fall 2002, "Passed" includes "Exempt", "Regents", "SAT" and "CPE" (College Proficiency Exam) in Reading, Writing, and Math.

Source: Fall, 1994-2003; CUNY Show Tapes (electronic data files).

Table 9: Placement Test Results by Enrollment Status¹⁻³, Fall 2003

	Reading				Math				Writing			
	Pass	Exempt ³	Fail	Total N	Pass	Exempt ³	Fail	Total N	Pass	Exempt ³	Fail	Total N
First-time Freshman Degree	26.8%	69.0%	4.2%	1,149	34.3%	64.1%	1.6%	1,156	21.6%	68.4%	10.1%	1,160
Undergraduate Advanced Standing Transfer	32.4%	66.7%	0.8%	1,085	41.0%	57.6%	1.4%	1,097	31.3%	65.6%	3.1%	1,104
Undergraduate Permit-in	66.7%	33.3%		6	66.7%	33.3%		6	66.7%	33.3%		6
Undergraduate Re-admit Degree	75.1%	24.7%	0.3%	381	78.3%	20.6%	1.0%	383	76.0%	23.2%	0.8%	384
Undergraduate Re-admit Non-Degree	83.3%	16.7%		6	33.3%	33.3%	33.3%	6	66.7%	16.7%	16.7%	6
Undergraduate Continuing Degree	40.8%	58.7%	0.5%	5,421	56.3%	43.4%	0.2%	5,425	40.9%	58.3%	0.8%	5,437
Undergraduate First-time Non-Degree	59.1%	31.8%	9.1%	22	50.0%	29.2%	20.8%	24	44.0%	28.0%	28.0%	25
Undergraduate Continuing Non-Degree	86.7%	6.7%	6.7%	15	83.3%		16.7%	18	77.8%	5.6%	16.7%	18

¹Excludes missing and "College Now" student scores; includes SEEK. (NOTE: Table 8 separates First-time Freshmen into regular and SEEK.)

²Continuing Students = Total degree students minus (first-time degree + advanced standing transfer + continuing non-degree + re-admitted students)

³Exempt includes "Certified", "Regents", "SAT", "CPE" (College Proficiency Exam), "Prior BA/BS" and "Waivered".

Source: Fall, 2003; CUNY Show Tape (electronic data file)

The City College of New York Office of Institutional Research

Table 10: Undergraduate and Graduate FTEs, Fall 1993-2002¹⁻²

	1994	1995	1996	1997	1998	1999	2000	2001	2002	2003
Undergraduate	9,076	8,296	7,456	7,058	6,938	6,375	6,195	6,037	6,651	6,716
	84.9%	83.5%	84.9%	83.8%	85.5%	83.1%	81.9%	82.2%	80.5%	79.1%
Graduate	1,618	1,644	1,330	1,360	1,174	1,295	1,372	1,312	1,616	1,779
	15.1%	16.5%	15.1%	16.2%	14.5%	16.9%	18.1%	17.8%	19.5%	20.9%
Total	10,694	9,940	8,786	8,418	8,112	7,670	7,567	7,349	8,267	8,495

¹FTE's are calculated by dividing total credits+hours by 15 for Undergraduates and by 12 for Graduate students (See "Sources").

²Includes CUNY Honors College, SEEK, "permit" students (undergraduate and Masters) from other CUNY colleges, "CUNY BA" students and excludes BMCC students.

Sources: Fall 2000-2003, SIMS SCURREG data file, Fall 1998-1999; CUNY Show Tapes (electronic data files). Previous years: CUNY Form A (Page 50sc - 32sc)

Graph 10: Undergraduate and Graduate FTEs, Fall 1994-2003

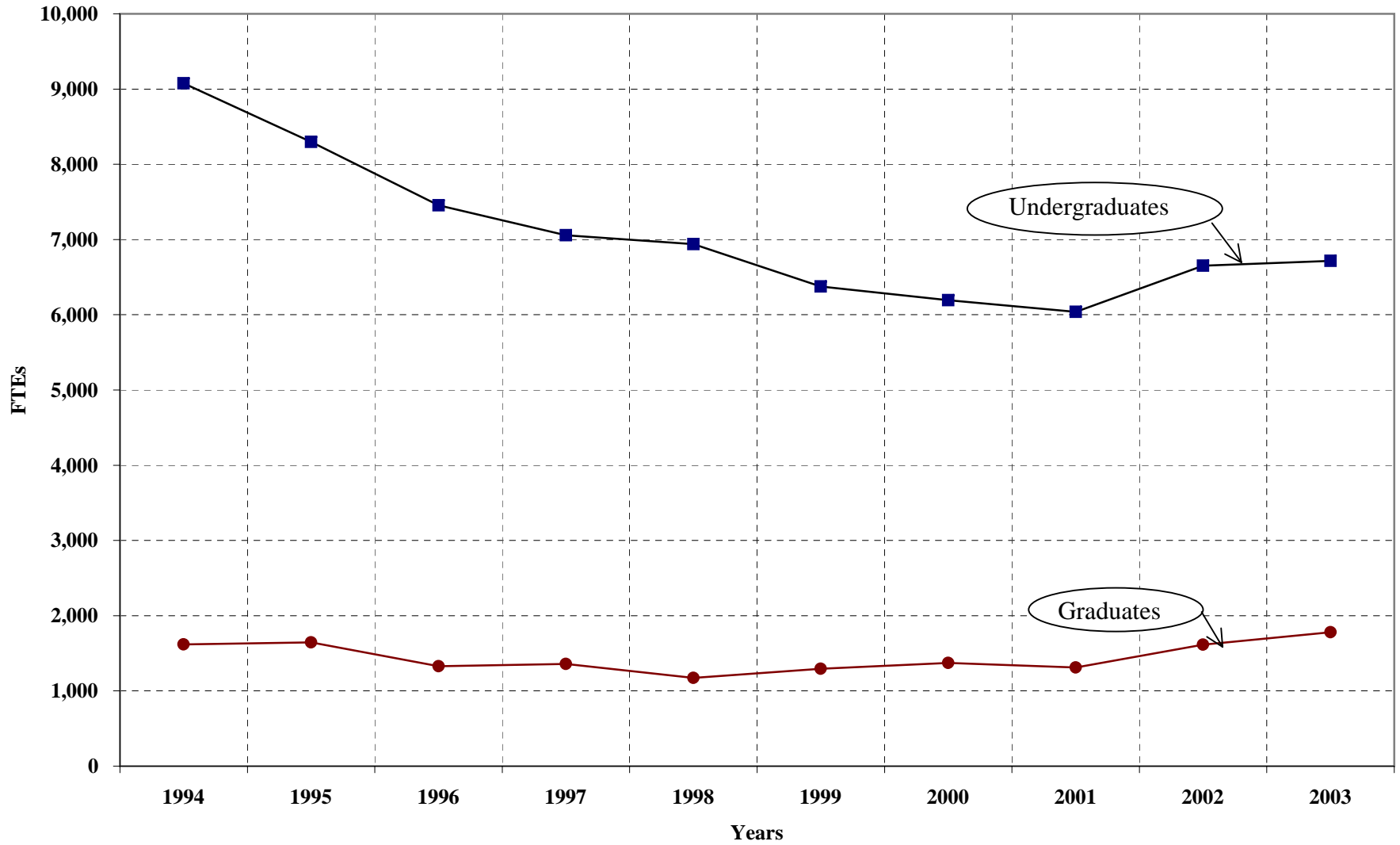


Table 11: Undergraduate and Graduate FTEs by School and Division, Fall 2003¹

	Undergraduate	Graduate
CENTER FOR WORKER EDUCATION	349.3	
CUNY HONORS COLLEGE	13.8	
ARCHITECTURE	286.5	22.8
SCHOOL OF EDUCATION²	131.1	912.1
SCHOOL OF ENGINEERING		
Biomedical	2.8	10.8
Chemical	28.1	10.1
Civil (includes Transportation Institute)	66.5	56.8
Computer Science	232.5	83.9
Electrical	217.0	62.3
Engineering (General courses not in a separate department)	97.5	27.8
Mechanical	89.1	36.0
Total	733.4	287.7
SOPHIE DAVIS SCHOOL OF MEDICINE	234.7	
HUMANITIES & ARTS³		
Art	325.7	50.0
English (includes Classics/Speech/Theater/WHUM)	894.4	102.3
English as a Second Language	39.1	
Foreign Languages	258.7	19.5
History (includes American Studies/USSO/WCIV)	342.4	29.0
Media, Communications and Art	161.2	46.8
Music	180.3	14.5
Philosophy	123.0	
Total	2,378.3	262.1
DIVISION OF SCIENCE		
Biology	226.1	20.0
Chemistry (includes Biochemistry)	271.2	10.2
Earth and Atmospheric Science	38.9	0.4
Mathematics	599.9	43.3
Physics (includes Astronomy)	215.3	4.6
Science	67.5	8.5
Total	1,419.0	87.0
DIVISION OF SOCIAL SCIENCE⁴		
Anthropology	82.9	5.0
Economics	225.6	53.8
Political Science (Graduate FTEs are for International Relations)	221.5	80.1
Psychology	413.0	58.5
Sociology	211.3	10.1
Total	1,169.9	207.5

¹Includes SEEK & "permit" (undergraduate and Masters) from other CUNY colleges & "CUNY BA" students. Excludes BMCC students FTEs.

²Includes off-campus, graduate education courses & the Natural History Museum FTEs.

³Jewish, Asian Studies, & Italian Area Studies are in the Humanities total.

⁴Black, International Studies, International Relations & Urban Legal Studies are in Political Science. Latin American & Caribbean Studies is in the Sociology Department. Women's Studies is in the Social Science total.

Sources: Fall 2003 Show Tape and the SIMS Extract SCURREG (10/09/03) data file.

Table 12: Undergraduate and Graduate Degrees Awarded, 1993-94 through 2002-03

Undergraduate	1993-94	1994-95	1995-96	1996-97	1997-98	1998-99	1999-00	2000-01	2001-02	2002-03
American Indian or Alaskan Native	11	8	4	3	4	4	3	2	1	2
Asian-Pacific Islander	207	181	263	212	175	188	144	123	134	149
Black	449	563	581	595	489	514	382	422	461	464
Hispanic	296	310	301	373	335	383	311	362	403	419
Non-Resident Alien ²	101	95	55	84	75	59	43	52	176	182
White	198	177	220	176	156	129	121	99	120	147
Unknown	41	20	27	13	20	16	13	49	5	
Subtotal	<i>1,303</i>	<i>1,354</i>	<i>1,451</i>	<i>1,456</i>	<i>1,254</i>	<i>1,293</i>	<i>1,017</i>	<i>1,109</i>	<i>1,300</i>	<i>1,363</i>
	57.4%	56.5%	56.3%	61.7%	59.5%	62.3%	61.2%	61.7%	62.6%	63.0%
Graduate¹	1993-94	1994-95	1995-96	1996-97	1997-98	1998-99	1999-00	2000-01	2001-02	2002-03
American Indian or Alaskan Native	5		4	2	7	1	1	5	1	
Asian-Pacific Islander	115	98	270	82	94	91	81	70	97	105
Black	240	260	281	204	206	201	152	166	167	165
Hispanic	155	183	179	226	207	172	158	149	192	220
Non-Resident Alien ²	204	234	52	151	100	106	92	100	191	195
White	175	185	247	159	146	120	94	82	104	115
Unknown	72	81	94	81	93	90	67	116	24	
Subtotal	<i>966</i>	<i>1,041</i>	<i>1,127</i>	<i>905</i>	<i>853</i>	<i>781</i>	<i>645</i>	<i>688</i>	<i>776</i>	<i>800</i>
	42.6%	43.5%	43.7%	38.3%	40.5%	37.7%	38.8%	38.3%	37.4%	37.0%
Total	2,269	2,395	2,578	2,361	2,107	2,074	1,662	1,797	2,076	2,163

¹Includes 3 Advanced Certificates in 1999-00, 5 in 2000-01, 3 in 2001-02, and 5 in 2002-03.

²See "Data Sources" for a definition of Non-Resident Alien.

Source: CCNY: 1993/94 - 1996/97 Graduates - City College; Degree Conferred;
Tables 10, 20-1, Plane 4, Part 9-1 & Plane 5, Part 6-1 & Table 20-2, Plane 6: Degree Type
1997/98: CCNY Report 247 (electronic data files); 1999 to present SIMS Graduation Tapes

Graph 12: Undergraduate and Graduate Degrees Awarded, 1993-94 through 2002-03

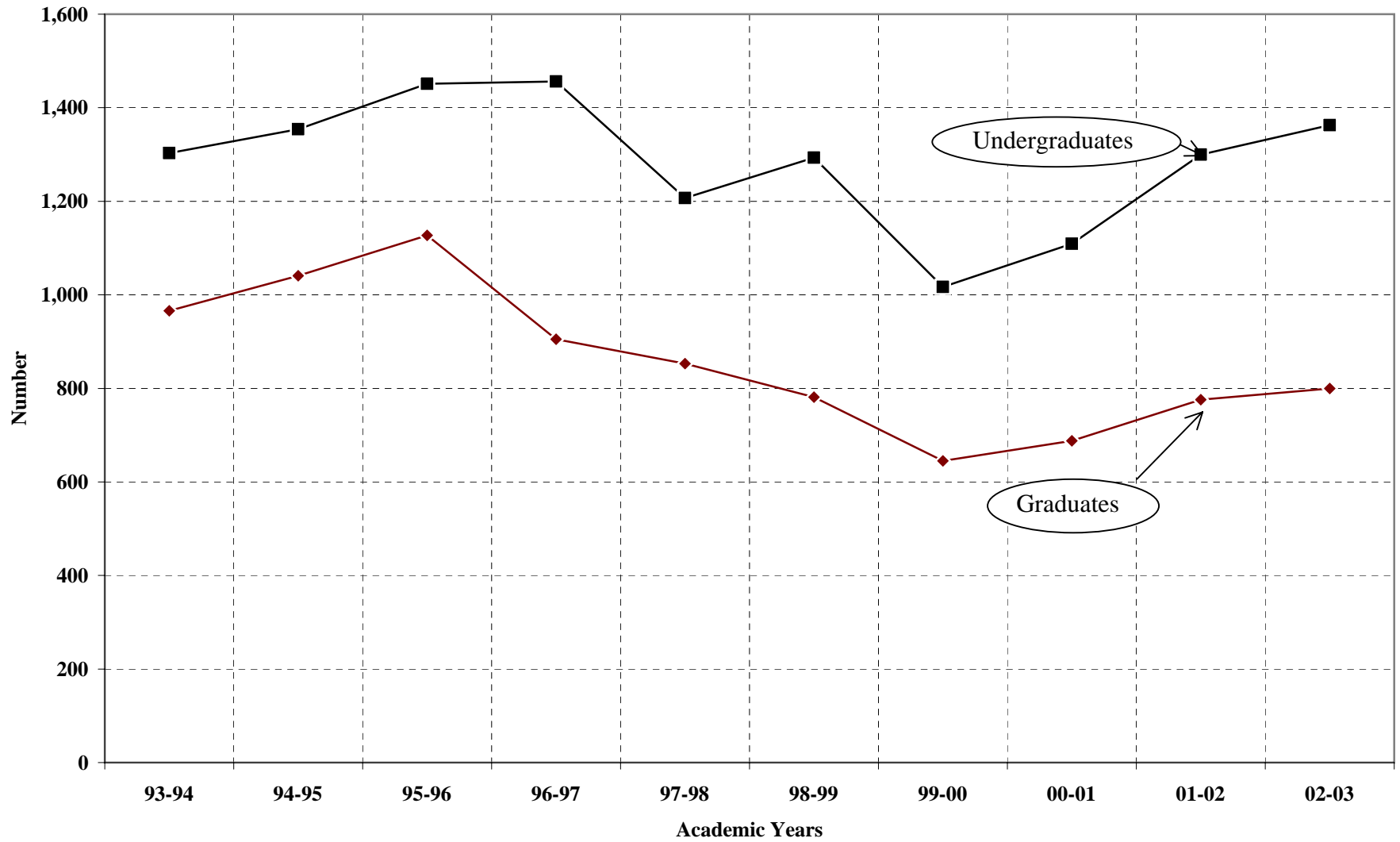
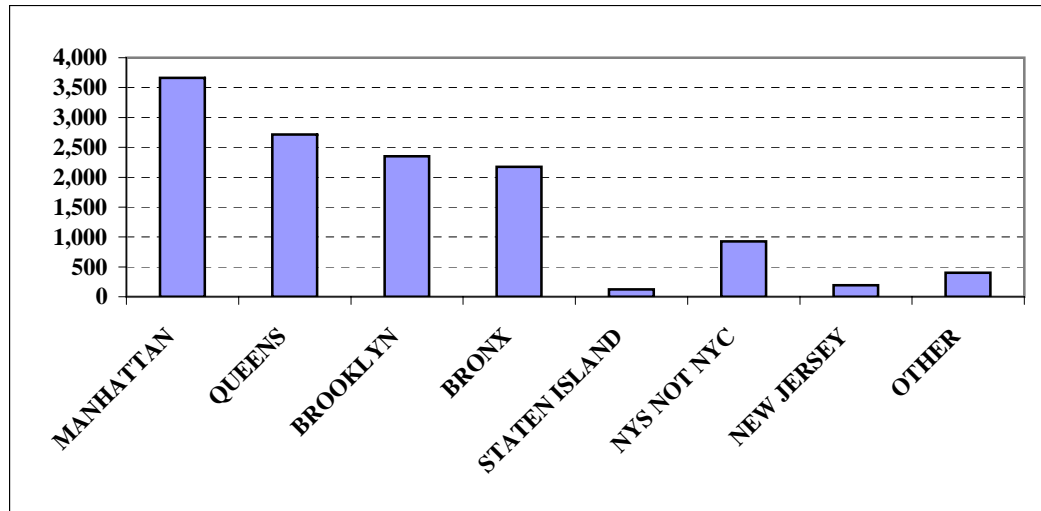


Table 13: All Students by Residence/Zip Code and Gender, Fall 2003



Residence	Male		Female		Total	
	Count	Percentage	Count	Percentage	Count	Percentage
NEW JERSEY ¹	89	1.5%	102	1.6%	191	1.5%
MANHATTAN	1,560	25.7%	2,103	32.4%	3,663	29.2%
STATEN ISLAND	70	1.2%	55	0.8%	125	1.0%
BRONX	941	15.5%	1,234	19.0%	2,175	17.3%
NYS NOT NYC ²	445	7.3%	484	7.5%	929	7.4%
QUEENS	1,518	25.0%	1,197	18.4%	2,715	21.6%
BROOKLYN	1,226	20.2%	1,123	17.3%	2,349	18.7%
OTHER ³	213	3.5%	190	2.9%	403	3.2%
Total	6,062	100.0%	6,488	100.0%	12,550	100.0%

¹New Jersey includes Bergen, Essex, Hudson and Union.

²NYS not NYC includes Nassau, Putnam, Rockland, Suffolk and Westchester.

³Other has students from outside the NYC area.

Source: Fall 2003; CUNY Show Tape (electronic data file)

The City College of New York Office of Institutional Research

Table 14: Students by Native Language and Gender as of Fall 2003¹

	Male	Female	Total
SPANISH	658	767	1,425
CHINESE ²	274	101	375
BENGALI	139	71	210
KOREAN	65	53	118
CREOLE	72	40	112
FRENCH	44	39	83
ARABIC	66	16	82
URDU	55	26	81
JAPANESE	27	48	75
RUSSIAN	38	33	71
OTHER	37	22	59
POLISH	30	22	52
GREEK	35	12	47
YORUBA	30	13	43
PHILIPINO ³	24	16	40
HINDI	17	21	38

	Male	Female	Total
ALBANIAN	25	11	36
MALAYALAM	18	15	33
IGBO	22	9	31
PUNJABI	27	4	31
HEBREW	21	9	30
VIETNAMESE	18	8	26
BURMESE	16	6	22
PORTUGUESE	10	12	22
TWI-FANTE	17	3	20
GUJARATI	10	6	16
TURKISH	8	7	15
AMHARIC	8	3	11
ITALIAN	7	4	11
2 or more languages	8	2	10
SERBO-CROATIAN	6	4	10
WOLOF	5	5	10

¹This table shows only languages, **besides** English, spoken by 10 or more students. This data collection started in Fall 1992.

The total of reported languages spoken, **besides** English, in Fall 2003 at CCNY was 91.

²Chinese includes Cantonese and Mandarin.

³Philipino includes Tagalog.

Source: Fall 2003; CUNY Show Tape (electronic data file)

Table 15: Students by Country of Birth and Gender, Fall 2003¹

	Male	Female	Total		Male	Female	Total
DOMINICAN REP	169	204	373	TURKEY	14	8	22
JAMAICA	103	90	193	ALBANIA	13	8	21
CHINA	101	50	151	EL SALVADOR	11	10	21
BANGLADESH	103	47	150	VIETNAM	16	5	21
TRINIDAD & TOBAGO	52	66	118	EGYPT	18	2	20
HAITI	76	39	115	UNITED KINGDOM	8	12	20
COLOMBIA	58	53	111	HONDURAS	10	8	18
INDIA	68	40	108	TAIWAN	11	7	18
SOUTH KOREA	56	49	105	BRAZIL	7	9	16
ECUADOR	48	44	92	ST. LUCIA	10	6	16
NIGERIA	61	22	83	CYPRUS	13	2	15
JAPAN	28	49	77	DOMINICA	11	4	15
GUYANA	37	27	64	ST. VINCENT & THE GRENADINES	10	5	15
PAKISTAN	42	13	55	YUGOSLAVIA	8	6	14
MEXICO	30	24	54	FRANCE	6	7	13
POLAND	29	15	44	GREECE	11	2	13
PERU	29	15	44	MOROCCO	10	3	13
GHANA	34	10	44	GRENADA	7	5	12
HONG KONG	24	13	37	ETHIOPIA	7	4	11
ISRAEL	23	10	33	SENEGAL	5	6	11
PHILIPPINES	18	14	32	ST KITTS & NEVIS	4	7	11
RUSSIA	20	8	28	ARGENTINA	7	3	10
BARBADOS	14	10	24	BOLIVIA	7	3	10
MYANMAR (BURMA)	18	6	24	IVORY COAST	5	5	10
VENEZUELA	12	12	24	ROMANIA	5	5	10
				THAILAND	6	4	10

¹This table shows countries, **besides** the USA, from which 10 or more students came. This data collection started in Fall 1992. In Fall 2003, the total of countries reported at CCNY **besides** the USA was 147. 2,904 (23.1%) out of our 12,555 students reported being born outside the USA. 9,665 (76.9%) didn't respond to the question (or selected "USA") on the Admission Application.

Source: Fall 2003; CUNY Show Tape (electronic data file)

Table 16: Undergraduate Enrollment, Fall 1994-2003

	1994	1995	1996	1997	1998	1999	2000	2001	2002	2003
Full-Time	7,912 68.6%	7,201 67.4%	6,464 67.2%	6,024 66.4%	5,893 66.5%	5,379 64.8%	5,200 63.2%	5,054 62.7%	5,597 64.8%	5,953 66.6%
Part-Time	3,614 31.4%	3,485 32.6%	3,156 32.8%	3,042 33.6%	2,970 33.5%	2,928 35.2%	3,033 36.8%	3,013 37.3%	3,041 35.2%	2,983 33.4%
Women	5,534 48.0%	5,296 49.6%	4,859 50.5%	4,645 51.2%	4,597 51.9%	4,327 52.1%	4,255 51.7%	4,109 50.9%	4,432 51.3%	4,391 49.1%
Men	5,992 52.0%	5,390 50.4%	4,761 49.5%	4,421 48.8%	4,266 48.1%	3,980 47.9%	3,978 48.3%	3,958 49.1%	4,206 48.7%	4,545 50.9%
Non-Degree	492 4.3%	439 4.1%	420 4.4%	345 3.8%	323 3.6%	268 3.2%	285 3.5%	329 4.1%	500 5.8%	401 4.5%
Degree	11,034 95.7%	10,247 95.9%	9,200 95.6%	8,721 96.2%	8,540 96.4%	8,039 96.8%	7,948 96.6%	7,738 95.9%	8,138 94.2%	8,535 95.5%
SEEK	1,671 14.5%	1,252 11.7%	1,007 10.5%	979 10.8%	988 11.1%	944 11.4%	943 11.5%	856 10.6%	866 10.0%	842 9.4%
Total ¹	11,526	10,686	9,620	9,066	8,863	8,307	8,232	8,067	8,638	8,936

¹Includes "permit" students from other CUNY colleges and "CUNY BA" students.

Sources: Fall 1994-2003; CUNY Show Tapes (electronic data files)

The City College of New York Office of Institutional Research

Table 17: Undergraduates by Class Status¹⁻², Fall 1994-2003

	1994	1995	1996	1997	1998	1999	2000	2001	2002	2003
Freshmen	2,969 26.9%	2,526 24.7%	2,091 22.7%	2,171 24.9%	2,228 26.1%	2,028 25.2%	2,611 31.7%	2,529 31.3%	2,890 33.5%	3,182 35.6%
Sophomores	2,211 20.0%	1,969 19.2%	1,750 19.0%	1,646 18.9%	1,531 17.9%	1,544 19.2%	1,714 20.8%	1,577 19.5%	1,684 19.5%	1,867 20.9%
Juniors	2,611 23.7%	2,548 24.9%	2,371 25.8%	2,189 25.1%	2,072 24.3%	1,933 24.0%	1,887 22.9%	1,989 24.7%	2,022 23.4%	1,921 21.5%
Seniors	3,243 29.4%	3,199 31.2%	2,986 32.5%	2,714 31.1%	2,709 31.7%	2,536 31.5%	2,020 24.5%	1,972 24.4%	2,042 23.6%	1,966 22.0%
Total	11,034	10,242	9,198	8,720	8,540	8,041	8,232	8,067	8,638	8,936

¹For definition of "class status" see "Technical Note".

²Includes "permit" students from other CUNY colleges and "CUNY BA" students.

Sources: Fall 1994-2003; CUNY Show Tapes (electronic data files)

Graph 17: Undergraduates by Class Status, 1994-2003

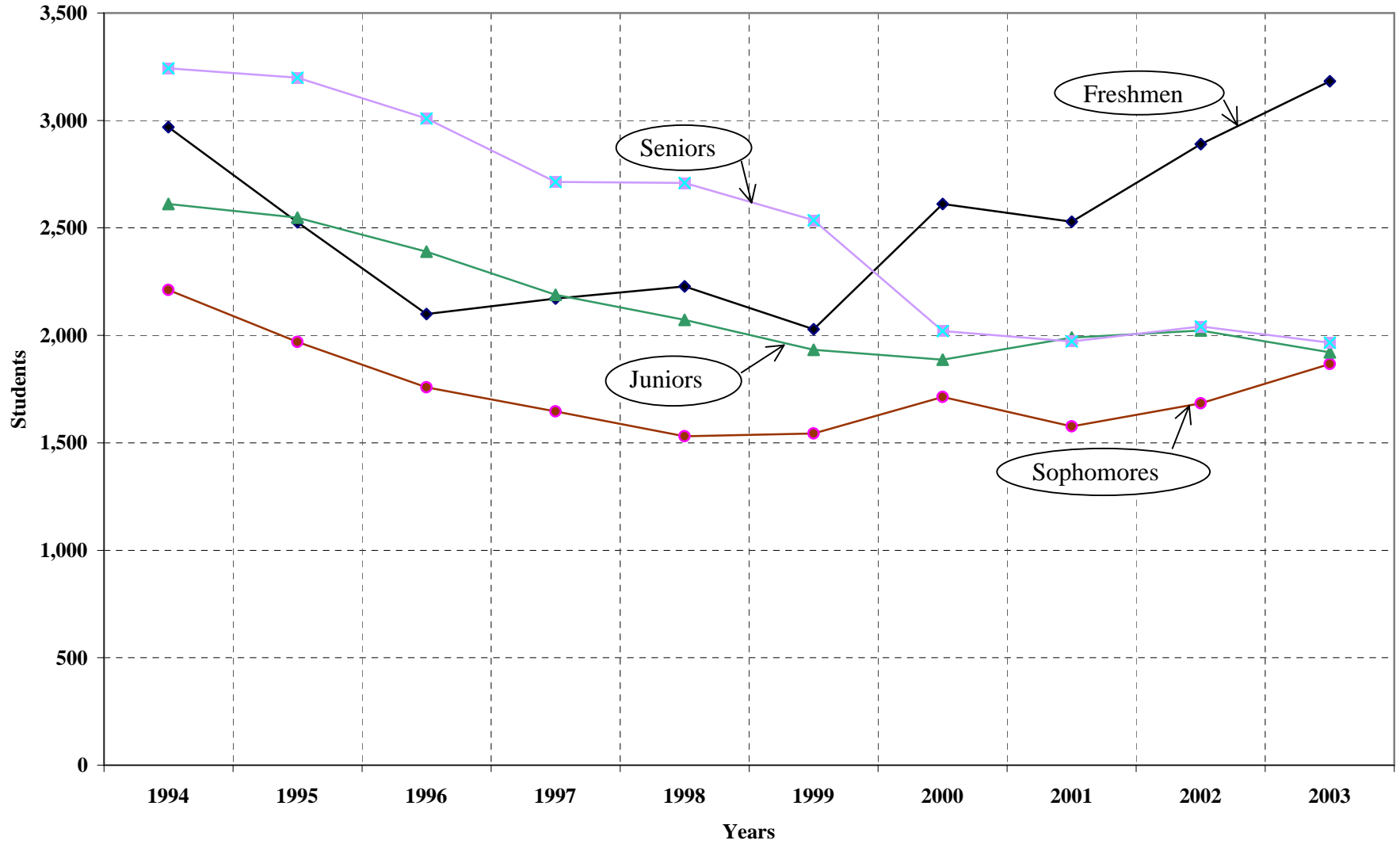


Table 18: Undergraduate Enrollment by Lower/Upper Division, Full/Part-time, Fall 1994-2003¹

LOWER DIVISION²	1994	1995	1996	1997	1998	1999	2000	2001	2002	2003
Full-time	4,144 80.0%	3,561 79.2%	3,055 79.5%	3,022 79.2%	2,950 78.5%	2,777 77.7%	2,945 72.9%	2,746 66.9%	3,088 67.5%	3,490 69.1%
Part-time	1,036 20.0%	934 20.8%	786 20.5%	795 20.8%	809 21.5%	795 22.3%	1,097 27.1%	1,360 33.1%	1,486 32.5%	1,559 30.9%
Total Lower Division	5,180 46.9%	4,495 43.9%	3,841 41.8%	3,817 43.8%	3,759 43.1%	3,572 41.8%	4,042 50.3%	4,106 51.7%	4,574 56.7%	5,049 58.5%
UPPER DIVISION³	1994	1995	1996	1997	1998	1999	2000	2001	2002	2003
Full-time	3,731 63.7%	3,601 62.7%	3,361 62.7%	2,965 60.5%	2,904 60.7%	2,567 57.4%	2,216 56.7%	2,308 58.3%	2,509 61.7%	2,463 63.4%
Part-time	2,123 36.3%	2,146 37.3%	1,996 37.3%	1,938 39.5%	1,877 39.3%	1,902 42.6%	1,690 43.3%	1,653 41.7%	1,555 38.3%	1,424 36.6%
Total Upper Division	5,854 53.1%	5,747 56.1%	5,357 58.2%	4,903 56.2%	4,781 56.0%	4,469 55.6%	3,906 49.1%	3,961 49.1%	4,064 47.0%	3,887 43.5%
Total	11,034	10,242	9,198	8,720	8,540	8,041	7,948	8,067	8,638	8,936

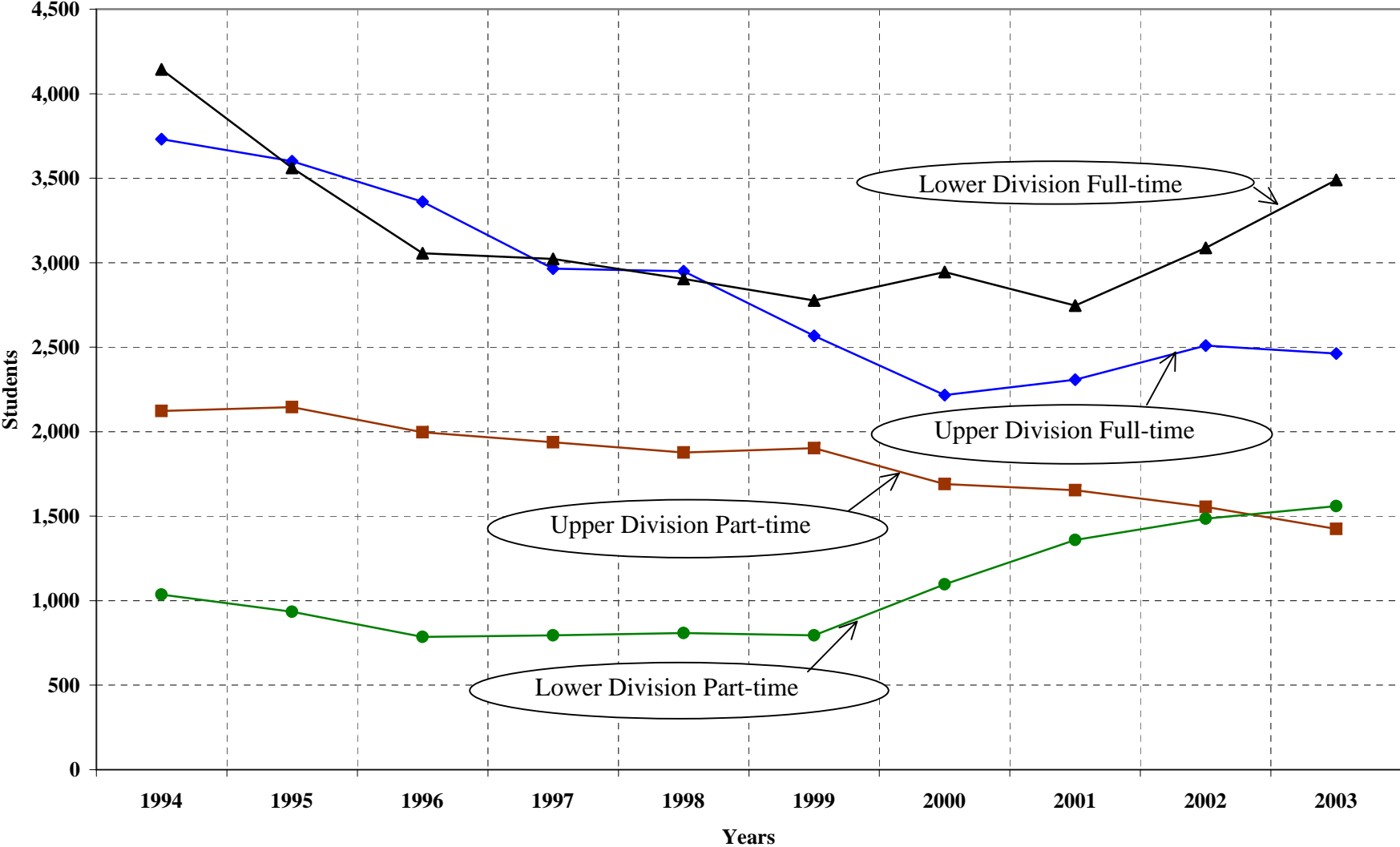
¹Includes "permit" students from other CUNY colleges and "CUNY BA" students.

²Lower division = Freshmen and Sophomores with 60.5 credits or less.

³Upper Division = Juniors and Seniors with more than 60.5 credits.

Sources: Fall 1994-2003; CUNY Show Tapes (electronic data files)

Graph 18: Undergraduates by Lower/Upper Division and Full/Part-time, Fall 1994-2003



The City College of New York Office of Institutional Research

Table 19: Undergraduate FTEs by Class Status, Fall 1994-2003

	1994	1995	1996	1997	1998	1999	2000	2001	2002	2003
Freshmen	2,654 29.8%	2,222 27.3%	1,832 25.1%	1,900 27.7%	2,103 30.3%	1,836 28.8%	1,975 32.3%	1,814 30.0%	2,103 32.2%	2,316 34.5%
Sophomores	1,774 19.9%	1,574 19.4%	1,417 19.4%	1,312 19.1%	1,228 17.7%	1,255 19.7%	1,332 21.8%	1,281 21.2%	1,345 20.6%	1,470 21.9%
Juniors	2,031 22.8%	1,979 24.3%	1,851 25.4%	1,711 24.9%	1,618 23.3%	1,472 23.1%	1,414 23.1%	1,546 25.6%	1,589 24.4%	1,499 22.3%
Seniors	2,442 27.4%	2,360 29.0%	2,193 30.1%	1,942 28.3%	1,988 28.7%	1,806 28.4%	1,391 22.8%	1,396 23.1%	1,489 22.8%	1,428 21.3%
Total ¹	8,901	8,136	7,293	6,865	6,938	6,369	6,112	6,037	6,526	6,712

¹Includes non-degree and "permit" students from other CUNY colleges and "CUNY BA" students.

Sources: Fall 1994-2003; CUNY Show Tapes (electronic data files)

Graph 19: Undergraduate FTEs by Class Level, Fall 1994-2003

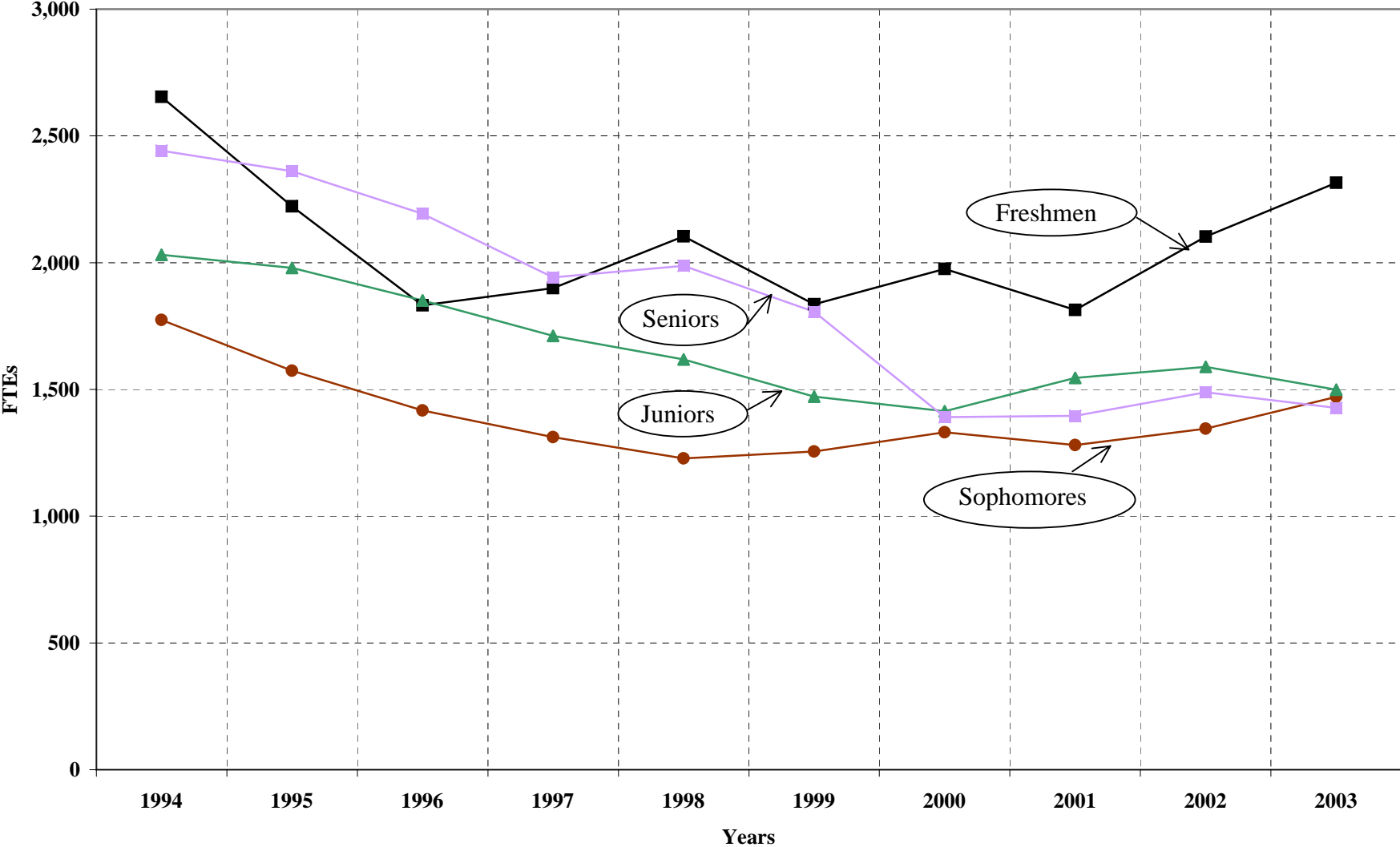


Table 20: Degree-Seeking Juniors/Seniors by Division/School, Fall 1999-2003¹

	1999		2000		2001		2002		2003	
Arts ²	193	4.3%								
Humanities & Arts ²	315	7.1%	478	12.2%	260	12.8%	580	14.3%	616	15.8%
Sciences	353	7.9%	329	8.4%	138	6.8%	297	7.3%	314	8.1%
Social Sciences	722	16.2%	545	14.0%	270	13.3%	515	12.7%	562	14.5%
School of Architecture	203	4.5%	191	4.9%	121	6.0%	234	5.8%	241	6.2%
School of Education	342	7.7%	221	5.7%	94	4.6%	204	5.0%	219	5.6%
School of Engineering	874	19.6%	795	20.4%	459	22.7%	932	22.9%	913	23.5%
Biomedical Education	228	5.1%	205	5.2%	104	5.1%	228	5.6%	218	5.6%
CWE	597	13.4%	582	14.9%	311	15.4%	586	14.4%	484	12.5%
Undeclared Major	641	14.3%	560	14.3%	267	13.2%	486	12.0%	320	8.2%
Total	4,468		3,906		2,024		4,062		3,887	

¹Students withdrawn from or not attending all courses are excluded. "Permit" students from other CUNY colleges , SEEK and "CUNY BA" students are included.

²Combined in Fall 2000.

Sources: Fall 1999-2003; CUNY Show Tapes (electronic data files)

The City College of New York Office of Institutional Research

**Table 21: Undergraduates: U.S. Citizens and Non-Resident Aliens
by Ethnicity/Race, Full/Part-time Status and Gender, Fall 2003**

NON-RESIDENT ALIENS (N=978) ^{1&3}	Full-time	Female	Male	Part-time	Female	Male
Non-Resident Aliens		37.0%	49.8%		34.4%	41.2%
Total	757	317	440	221	104	117

U.S. CITIZENS (N=7,985) ^{2&3}	Full-time	Female	Male	Part-time	Female	Male
American Indian or Alaskan Native	0.2%	0.2%	0.1%	0.1%		0.2%
Asian-Pacific Islander	21.5%	18.2%	24.6%	12.6%	9.4%	16.2%
Black	28.9%	32.3%	25.7%	36.0%	39.0%	32.5%
Hispanic (includes Puerto Rican)	37.6%	39.6%	35.8%	36.6%	38.5%	34.5%
White	11.9%	9.8%	13.8%	14.8%	13.2%	16.6%
Total	5,196	2,505	2,691	2,762	1,465	1,297

¹See "Data Sources" for a definition of Non-resident Aliens.

²Includes permanent residents.

³Includes non-degree and "permit" students from other CUNY colleges and "CUNY BA" students.

Source: Fall 2003; CUNY Show Tape (electronic data file)

Table 22: Undergraduate Areas of Study by Gender and Ethnicity/Race, Fall 2003¹

		Amerind	Asian	Black	Hispanic	White	Total
Engineering		6	673	625	709	246	2,259
	Females	2	116	136	146	47	447
	Males	4	557	489	563	199	1,812
Humanities & Arts		2	156	289	362	162	971
	Females	2	82	148	192	71	495
	Males		74	141	170	91	476
CWE		1	34	359	251	90	735
	Females	1	27	301	215	65	609
	Males		7	58	36	25	126
Sciences			232	329	304	119	984
	Females		131	202	194	55	582
	Males		101	127	110	64	402
Architecture		1	126	110	232	137	606
	Females		57	42	80	49	228
	Males	1	69	68	152	88	378
Social Science			79	265	288	45	677
	Females		47	176	192	28	443
	Males		32	89	96	17	234
Bio-Medical			158	113	74	43	388
	Females		93	62	46	24	225
	Males		65	51	28	19	163
Education			22	127	192	28	369
	Females		18	108	160	19	305
	Males		4	19	32	9	64
CUNY BA			2	11	8	9	30
	Females			8	4	5	17
	Males		2	3	4	4	13
Undeclared		1	351	538	743	277	1,910
	Females		178	303	414	142	1,037
	Males	1	173	235	329	135	873
	Total	11	1,833	2,766	3,163	1,156	8,929

¹Includes non-degree and "permit" students from other CUNY colleges, but excludes high school students taking college courses.

Source: Fall 2003; CUNY Show Tape (electronic data file)

Table 23: Undergraduates by Major, Fall 1999-2003¹

	1999	2000	2001	2002	2003
American Studies 140	1	1	2	2	3
Anthropology 351	17	15	13	9	16
Architecture 511 (now 51A)	209	203	327	216	176
B Arch 5 year degree (511)	20	40	14	34	27
Art 111	130	122	126	155	158
Art "K-12" Teacher 925 (was 25B)		11	8	7	4
Asian Studies 141	2				
Asian, Latin Amer. & Russian Studies 141		3	5	4	11
Bilingual-Child 926 (was Bilingual-Chinese 222)	4	6	9	5	20
Bilingual-Creole 228	1				
Bilingual-Spanish 223 (now 903 MSED)	71				
Biology 436 & 43F	319	161	43	116	119
Biology 7-12 2C6 (now 918)		1			
BioMed 575	294	302	311	330	331
Biochemistry 437, 444	47				
Black Studies 365 (now 142)	7				
Black, Puerto Rican & Jewish Studies 142		14	11	11	2
Chemical Engineering 611	49	56	39	28	55
Chemistry 438, 446 (now 446)	16	12	103	42	44
Chemistry 7-12 44F (now 916)		1			
Childhood Education 922 (was 221)	110	82	43	55	73
Civil Engineering 612	70	59	42	46	55
Communication, Film & Video 121	235	215	194	192	188
Comparative Literature 113	2	1	1	2	2
Computer Engineering (F16)			3	12	60
Computer Science 616	476	297	216	148	131
CUNY BA 890	22	8	19	22	30
Center for Worker Education (CWE) 888-89	962	813	825	807	701
CWE Early Childhood Education 220	64	156	112	55	34
Early Childhood Education 914				1	
EAS Education (7-12) 919					1
Economics 3EB (now 353)	96	98	85	75	78
Electrical Engineering 613	170	153	113	100	144
Engineering Technology 618	2				
English 114 & 1AD	122	92	82	125	148
English 7-12 2CB (now 920)		5	3		
Film Video BFA 118	1	9	8	3	1
Film Video BA 147 (now 118)	20				
French 130 (now in Romance Languages)	1				
Geology BS & BA 439 & 43I	24	31	23	18	15
History 356	38	30	22	23	40
International Studies 358	43	36	32	31	53
Landscape Architecture 513	16	17	17	8	22
L. Amer & Carib 366 (now in Asian, et al.)	16				
Math 442 & 44B (BS & BA)	21	20	20	28	31
Math, Science & Industry 445	8	11	5	11	7

NOTE: In Spring 2000, CCNY converted to CUNY's SIMS system. CCNY majors were re-coded.

In Fall 2002, the Education majors were recoded. All changes are shown. In Fall 2003, new majors were added.

¹The number(s) following the name of major is/are its City College code(s). Non-degree & "permit" students are included. High school students are not. Three BA/MA majors (Economics, History, & Math.) are included in the Master Degrees.

Table 23: Undergraduates by Major, Fall 1999-2003¹ (continued)

	1999	2000	2001	2002	2003
Math 7-12 2DB (now 915)		1	1		
Mechanical Engineering 614	87	70	55	56	65
Meteorology 440	2				
Management & Administration 355	140	80	78	76	101
Multimedia EDM		8	55	71	47
Music (K-12) 924					2
Music Tech (124)	19				
Music 145	49	78	93	104	112
Music BFA 119	56	68	65	66	85
Philosophy 360	21	15	13	10	5
Physician's Assistant 576	72	53	55	55	52
Physics 44C-BA 4DC-BS (was 443)	12	6	5	9	15
Physics 7-12 24C & 2DC (now 917)		2	2	1	
Political Science 359	33	27	43	34	49
Pre-law 361	19	16	10	7	9
Psychology 362-BA & CFB-BS	399	274	266	250	272
Puerto Rican Studies 367 (now 142)	6				
Romance Languages 130		11	35	59	71
Russian Area Studies 368 (now 141)	2				
Secondary Education Art 231	9				
Secondary Education Biology 236	2				
Secondary Education EAS 239	4				
Secondary Education Math 242	2				
Secondary Education Social Studies 234	2		2		
Sociology 363	134	105	83	85	78
Special Education (Emotional) 225	38	19	18	9	2
Special Education (Intellectual) 226	18				
Spanish 132 (now in Romance Languages)	14				
Speech 122	1				
Technology Education 290	3				
Theater 146	19	17	16	28	27
Theater BFA 120	1				
Undecided 999	2,938	2,454	1,893	2,108	1,920
Urban Legal 369	34	22	16	7	6
Waiting for Architecture 009	6	146	189	363	381
Waiting for BioMed 579				43	5
Waiting for BioMed Engineering 076				16	53
Waiting for Computer Science 007		612	715	672	502
Waiting for Computer Science Engineering 008				157	245
Waiting for Civil Engineering 003		115	149	174	239
Waiting for Chemical Engineering 004		71	72	65	47
Waiting for EDM					73
Waiting for Education 002	52	176	224	253	267
Waiting for Engineering (now coded separately)	406				
Waiting for Electrical Engineering 005		298	400	400	388
Waiting for Mechanical Engineering 006		154	220	229	275
Waiting for Science 001		192	389	510	751
Total	8,307	8,232	8,067	8,638	8,924

NOTE: In Spring 2000, CCNY converted to CUNY's SIMS system. CCNY majors were re-coded.

In Fall 2002, the Education majors were recoded. All changes are shown. In Fall 2003, new majors were added.

¹The number(s) following the name of major is/are its City College code(s). Non-degree students are included.

High school students are not. Three BA/MA majors (Economics, History, & Math.) are included in the Master Degrees.

Sources: Fall 1999-2003; CUNY Show Tapes (electronic data files)

Table 24: Undergraduate Degrees Awarded by Division or School, 1993-94 through 2002-03

	1993-94	1994-95	1995-96	1996-97	1997-98	1998-99	1999-00	2000-01	2001-02	2002-03
School of Architecture	112	98	92	85	87	89	96	65	105	119
Division of Arts	82	89	84	130	81	98				
Humanities & Art							124	189	227	299
Sophie Davis School of Medicine										
BioMed Education	46	56	56	60	56	79	49	47	34	50
Physician's Assistant	1	31	45	45	29	48	48	11	37	20
Center for Worker Education	101	131	132	136	145	147	137	167	190	210
School of Education	141	157	222	194	151	166	92	81	66	50
School of Engineering	363	275	289	261	242	212	212	171	205	214
Division of Humanities	47	37	55	53	61	49				
School of Nursing	32	135	115	114	12	4				
Division of Science	70	75	82	101	77	77	70	82	95	79
Division of Social Science	299	270	279	322	303	332	237	296	341	322
Total	1,294	1,354	1,451	1,501	1,244	1,301	1,065	1,109	1,300	1,363

Sources: CCNY: 1993/94 - 2002/03 Graduates - City College; Degree Conferred

Table 25: Bachelor Degrees by Major, 1999-2003¹

	1999	2000	2001	2002	2003
American Studies 140	1	1			
Anthropology 351	12	4	1	4	
Architecture 511 (now 51A)	73	87	61	100	105
Art 111	38	27	40	53	65
Asian Studies 141	1				
Asian, Latin Amer. & Russian Studies 141		3	3	3	4
Bilingual-Chinese 222 (now 926)	2			11	
Bilingual-Child N-6 926					6
Bilingual-Creole 228	2				
Bilingual-Spanish 223	57	9			
Biology 43F & 436	52	44	45	47	45
Biology 7-12 2C6		1	1		
BioMed 575	79	47	47	37	50
Biochemistry 437	8	12			
Black Studies 365 (now 142)	2				
Black, Puerto Rican & Jewish Studies 142		6	6	4	5
Chemical Engineering 611	30	9	24	18	24
Chemistry 438, 446 (now 446)	3	2	18	35	13
Chemistry 7-12 916				1	
Civil Engineering 612	19	27	19	14	14
Communication, Film & Video 121	31	21	57	61	70
Comparative Lit. 113	2			1	
Computer Engineer F16					3
Computer Science 616	62	70	57	91	71
Center for Worker Education (CWE) 888-889	147	129	147	172	192
Dance BFA 117	1				
Early Childhood Education 220 (CWE - 914)	6	8	20	18	18
Early Childhood Education 922					29
Economics 353 (now 352 & 3EB)	38	18	35	29	39
Elementary Education N-6 221 (now 922)	62	42	39	37	
Elementary Education Biling 222		20	22		
Electrical Engineering 613	67	80	48	54	68
English 114 (now 114 & 1AD)	38	31	41	40	67
Film/Video BA 147	2		3		
Geology 439 (now 439 & 43I)	3	2	7	3	7
History 356	10	20	12	13	17
History BA/MA 35F					1
International Relations 357	2				
International Studies 358	6	5	7	5	18
Jewish Studies 142 (now in Black, et al.)	1				
Landscape Architecture 513	9	9	4	5	14

NOTE: In Spring 2000, CCNY converted to CUNY's SIMS system. CCNY majors were re-coded.

In Fall 2002 & Spring 2003, Education majors were recoded. All changes are shown.

¹The number(s) following the name of major is/are its City College code(s).

Table 25: Bachelor Degrees by Major, 1999-2003¹ (continued)

	1999	2000	2001	2002	2003
L. Amer & Carib 366 (now in Asian, et al.)	3				
Management & Administration 355	20	10	17	34	26
Math 442 (was 442 & 44B)	8	5	7	7	11
Math, Science & Industry 445	4	4	3	2	
Mechanical Engineering 614	34	26	23	28	34
Multimedia Design EDM			3	4	9
Music 145	6	6	4	5	6
Music BFA 119	11	9	13	26	38
Music Teacher BFA 923					1
Music Tech. 124	2	1			
Nursing 555	2				
Nursing (RN Program) 556	1				
Physical Education 224	2				
Philosophy 360	2	5	6	7	6
Physician's Assistant 576	48	2	11	34	20
Physics 443 (now 44C & 4DC)	3	1	2	1	3
Political Science 359	11	12	14	22	12
Pre-law 361	6	2	1	5	2
Puerto Rican Studies 367 (now 142)	1				
Psychology 362	150	117	144	162	135
Psychology BS CFB					8
Romance Languages 130		6	6	14	14
Secondary Education Art 231	2	1			
Social Studies 7-12 234 (now 2CD)		1			
Sociology 363	59	54	55	62	65
Special Education (Emotional) 225	16	17		17	14
Special Education (Intellectual) 226	10		19		
Spanish 132 (in Romance Languages)	1				
Speech 122	1				
Speech Pathology 123				1	
Technology Education 290	1				
Theater 146	6	1	4	2	6
Theater BFA 120	3				
Urban Legal Studies 369	12	2	13	11	8
Vocational & Occupational Education 227	1	1			
Total	1,272	1,017	1,109	1,300	1,363

NOTE: In Spring 2000, CCNY converted to CUNY's SIMS system. CCNY majors were re-coded.

In Fall 2002 & Spring 2003, Education majors were recoded. All changes are shown.

¹The number(s) following the name of major is/are its City College code(s).

Sources: CCNY: 1998/99 -2002/03 Graduates - City College; Degree Conferred; CCNY Report 247 (electronic data files)

Table 26: Freshmen: High Schools of Origin, Fall 2003

ORIGINS	N
BROOKLYN TECH	36
LONG ISLAND CITY	28
A PHILLIP RANDOLPH	27
THOMAS EDISON VOC	25
NEWTON	24
MANHATTAN CENTER	20
JOHN BOWNE	18
DE WITT CLINTON	18
WILLIAM C. BRYANT	17
STUYVESANT	16
B N CARDOZO	16
BRONX SCIENCE	16
MIDWOOD	15
HEALTH PROF. HUMAN	13
WALTON	13
LAGUARDIA MUSIC/ART	13
C COLUMBUS	12
EDWARD R. MURROW	12
FOREST HILLS	12
FRANCIS LEWIS	12
GROVER CLEVELAND	12
BAYSIDE	11
INTERNATIONAL	11
HUMANITIES	10
J. F. KENNEDY	10
SHEEPSHEAD BAY	10
FOREIGN	77
GED	26
OUT-OF-STATE	41
ALL OTHERS	600
Total	1,171

Source: Fall 2003; CUNY Show Tape (electronic data file)

Table 27: New Freshmen by Age and Gender, Fall 2003

Age in Years	Median: 18		Mode: 18		Total
	Female		Male		
=<19	515	90.0%	522	87.1%	1,037
20-22	42	7.3%	60	10.0%	102
23-24	4	0.7%	7	1.2%	11
25-29	5	0.9%	4	0.7%	9
30-44	4	0.7%	6	1.0%	10
45-64	2	0.3%			2
Total	572	100.0%	599	100.0%	1,171

All Undergraduates by Age and Gender¹, Fall 2003

Age in Years	Median: 23		Mode: 18		Total
	Female		Male		
=<19	858	19.5%	898	19.8%	1,756
20-22	1,063	24.2%	1,205	26.5%	2,268
23-24	542	12.3%	676	14.9%	1,218
25-29	786	17.9%	847	18.6%	1,633
30-44	878	20.0%	766	16.9%	1,644
45-64	256	5.8%	143	3.1%	399
=>65	8	0.2%	10	0.2%	18
Total	4,391	100.0%	4,545	100.0%	8,936

¹Includes non-degree, "permit" students from other CUNY colleges, "CUNY BA" students, and high school students taking college courses.

Source: Fall 2003; CUNY Show Tape (electronic data file)

The City College of New York Office of Institutional Research

Table 28: SAT Scores for First-time Regular and SEEK Freshmen, Fall 2003¹

		Entry Type		
		Regular	SEEK	Total
SAT Verbal	None	183	96	279
	200-499	290	88	378
	500-800	342	27	369
SAT Math	None	96	74	170
	200-499	279	89	368
	500-800	440	48	488
SAT Total Verbal & Math	None	48	7	55
	400-999	392	171	563
	1000-1600	375	33	408
	Total students	815	211	1,026

Regular and SEEK SAT Means					
Regular	Total N	N Missing	Mean	Highest	Lowest
Verbal	784	31	485	800	200
Math	784	31	522	800	230
Math & Verbal	767	48	1005	1540	520
SEEK					
Verbal	205	6	408	650	200
Math	205	6	434	660	220
Math & Verbal	204	7	841	1290	490

¹Students who graduated from a foreign high school, with a GED, or were not recent high school graduates were removed.

Source: Fall 2003 CUNY Show Tape (electronic data file)

The City College of New York Office of Institutional Research

Table 29: Total SAT Scores for First-time Regular and SEEK Freshmen by Division, Fall 2003¹

Regular Students SAT Total Verbal & Math Scores							
	400-999	1000-1600	Total N	N Missing	Mean	Highest	Lowest
Architecture	31	33	64		1011	1410	640
BioMed	1	62	63	9	1264	1540	900
Education	16	6	22		906	1130	520
Engineering	118	147	265	11	1016	1490	610
Humanities & Arts	8	13	21	1	1083	1390	880
Social Science	1	1	2		1020	1070	970
Sciences	90	44	134	7	950	1440	590
Undeclared	127	69	196	20	943	1480	580
Total	392	375	767	48			

SEEK Students SAT Total Verbal & Math Scores							
	400-999	1000-1600	Total N	N Missing	Mean	Highest	Lowest
Architecture	7	1	8	2	880	1150	730
Education	13	2	15		823	1080	600
Engineering	38	16	54	1	891	1290	630
Humanities & Arts	7	2	9	1	796	1140	560
Sciences	18	3	21		816	1120	510
Undeclared	88	10	98	3	823	1210	490
Total	171	34	205	7			

¹Students who graduated from a foreign high school, with a GED, or were not recent high school graduates were removed.

Source: Fall 2003 CUNY Show Tape (electronic data file)

The City College of New York Office of Institutional Research

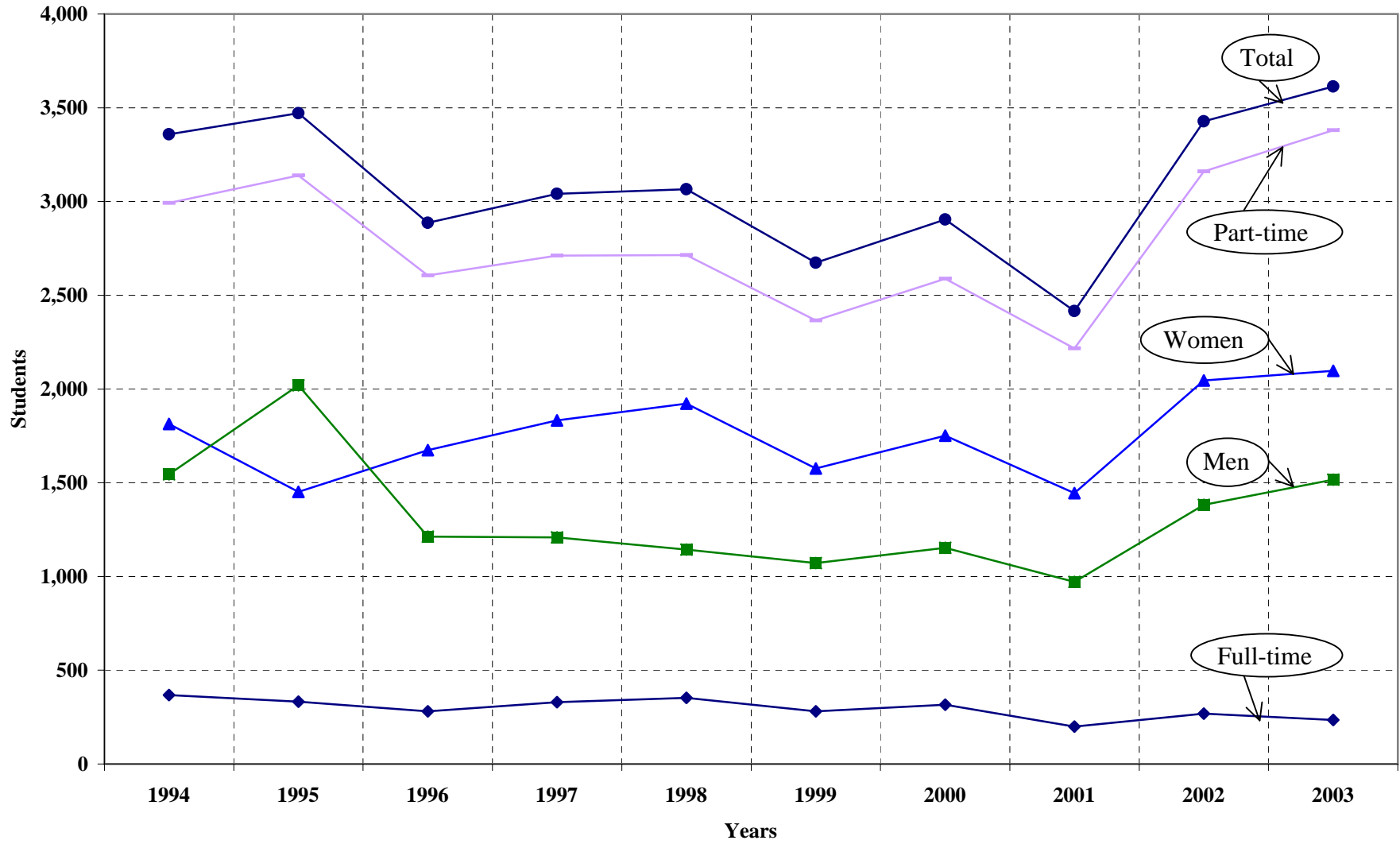
Table 30: Graduate Enrollment, Fall 1994-2003¹

	1994	1995	1996	1997	1998	1999	2000	2001	2002	2003
Full-time	367 10.9%	332 9.6%	281 9.7%	330 10.9%	352 11.5%	281 10.5%	316 10.9%	200 8.3%	268 7.8%	234 6.5%
Part-time	2,992 89.1%	3,139 90.4%	2,605 90.3%	2,711 89.1%	2,714 88.5%	2,366 88.5%	2,588 89.1%	2,216 91.7%	3,160 92.2%	3,380 93.5%
Women	1,814 54.0%	2,020 58.2%	1,674 58.0%	1,832 60.2%	1,922 62.7%	1,576 58.9%	1,751 60.3%	1,445 59.8%	2,046 59.7%	2,097 58.0%
Men	1,545 46.0%	1,451 41.8%	1,212 42.0%	1,209 39.8%	1,144 37.3%	1,071 40.1%	1,153 39.7%	971 40.2%	1,382 40.3%	1,517 42.0%
Non-Degree	811 24.1%	945 27.2%	678 23.5%	841 27.7%	1,112 36.3%	578 21.6%	987 34.0%	750 31.0%	1,222 35.6%	733 20.3%
Degree	2,548 75.9%	2,526 72.8%	2,208 76.5%	2,200 72.3%	1,954 63.7%	2,069 77.4%	1,917 66.0%	1,666 69.0%	2,206 64.4%	2,881 79.7%
Total	3,359	3,471	2,886	3,041	3,066	2,674	2,904	2,416	3,428	3,614

¹Includes Advanced Certificate, First Professional Degree and CUNY "permit" students.

Sources: Fall, 1994-2003; CUNY Show Tapes (electronic data files)

Graph 30: Graduate Enrollment, Fall 1994-2003



The City College of New York Office of Institutional Research

Table 31: Graduate Students by Division/School, Fall 1999-2003¹

	1999		2000		2001		2002		2003	
Humanities & Arts ²			274	9.4%	278	11.5%	316	9.2%	330	9.1%
Arts	144	5.4%								
Humanities	205	7.7%								
CLAS non-matric			224	7.7%	54	2.2%	29	0.8%	13	0.4%
Sciences	105	4.0%	93	3.2%	77	3.2%	96	2.8%	93	2.6%
Social Sciences	175	6.6%	214	7.4%	215	8.9%	245	7.1%	306	8.5%
School of Architecture	62	2.3%	50	1.7%	27	1.1%	12	0.4%	19	0.5%
School of Education	918	34.7%	681	23.5%	620	25.7%	1,070	31.2%	1,663	46.0%
School of Engineering	429	16.2%	369	12.7%	388	16.1%	436	12.7%	454	12.6%
Undeclared Major	31	1.2%	12	0.4%	7	0.3%	2	0.1%	3	0.1%
Non-Degree	578	21.8%	987	34.0%	750	31.0%	1,222	35.6%	733	20.3%
Total	2,647		2,904		2,416		3,428		3,614	

¹Includes Advanced Certificate, First Professional Degree and CUNY "permit" students.

²Started Spring 2000.

Sources: Fall 1999-2003; CUNY Show Tapes (electronic data files)

The City College of New York Office of Institutional Research

**Table 32: Graduate Students: U.S. Citizens and Non-Resident Aliens:
Ethnicity/Race, Full/Part-time Status and Gender, Fall 2003**

NON-RESIDENT ALIENS (Total N=477) ^{1&3}						
	Full-time	Female	Male	Part-time	Female	Male
		54.4%	45.6%		40.5%	59.5%
Total	79	43	36	415	168	247

U.S. CITIZEN (Total N=3,137) ^{2&3}						
	Full-time	Female	Male	Part-time	Female	Male
American Indian or Alaskan Native				0.1%	0.1%	0.1%
Asian-Pacific Islander	27.0%	29.2%	25.3%	17.0%	15.5%	19.4%
Black	21.4%	19.4%	23.0%	31.5%	32.4%	30.2%
Hispanic	25.2%	22.2%	27.6%	33.1%	36.5%	27.9%
White	24.5%	27.8%	21.8%	18.2%	15.6%	22.3%
Total	159	72	87	2,978	1,810	1,168

¹Includes Non-degree, Advanced Certificate, First Professional Degree and CUNY "permit" students.

²See "Data Sources" for a definition of Non-Resident Aliens.

³Includes permanent residents.

Source: Fall 2003; CUNY Show Tape (electronic data file)

The City College of New York Office of Institutional Research

Table 33: Graduate and Undergraduate Students: U.S. Citizens and Non-Resident Aliens, Fall 1999-2003¹

Undergraduate	1999		2000		2001		2002		2003	
U.S. Citizens	7,419	88.9%	7,737	94.0%	7,551	93.6%	8,012	92.8%	7,958	89.1%
Non-Resident Aliens ²	931	11.1%	494	6.0%	516	6.4%	626	7.2%	978	10.9%

Graduate	1999		2000		2001		2002		2003	
U.S. Citizens	2,203	83.2%	2,552	87.9%	2,035	84.2%	2,994	87.3%	3,137	86.8%
Non-Resident Aliens ²	444	16.8%	352	12.1%	381	15.8%	434	12.7%	477	13.2%

¹Table includes Non-degree, Advanced Certificate, First Professional Degree and CUNY "permit" students.

²See "Data Sources" for a definition of Non-Resident Aliens.

Sources: Fall 1999-2003; CUNY Show Tapes (electronic data files)

Table 34: Masters Degrees and Advanced Certificates Awarded by Division/School, 1993-94 through 2002-03¹

	1993-94	1994-95	1995-96	1996-97	1997-98	1998-99	1999-00	2000-01	2001-02	2002-03
School of Architecture ²	8	7			7	5	8	6	16	12
Division of Arts ³	17	18	27	20	15	18				
School of Education	505	567			575	449	386	384	388	438
School of Engineering	301	296	291	182	147	173	152	157	162	170
Division of Humanities ³	21	40	48	30	43	62				
Humanities & Arts ³							46	86	86	83
Professional Studies ⁴			666	608						
Division of Science	57	48	43	33	25	40	26	18	39	23
Division of Social Science	48	65	52	32	42	34	27	37	85	74
Total	957	1,041	1,127	905	854	781	645	688	776	800

¹Includes advanced certificates.

²The 5-year Architecture degree has been removed from this table. It is a bachelors degree.

³Started Spring 2000 includes Humanities & Arts.

⁴Existed from Fall 1996 through Spring 1997. It included Architecture, Communication-Film-Video, Education and Nursing.

Sources: Fall 1993/94-2002/03 Graduate Tapes (electronic versions)

Table 35: Graduate (Masters and Certificate) Students by Major, Fall 1999-2003¹⁻²

	1999	2000	2001	2002	2003
Applied Urban Anthropology 35A (was 351)	12	11	11	11	7
Architecture 511 (now in BA)	20	40	14		
Architecture 514/515					6
Art MA 11A (was 111)	42	35	28	32	32
Art MFA 112	31	27	30	28	29
Art K-12 Cert. 863 (was 23A)		20	23	24	33
Art Cert. 862				1	1
Bilingual Cert. 901					10
Bilingual Child. Cert. 902 (includes Bilingual-Chinese 222)	2			5	46
Bilingual Child Educ. 903 (was Bilingual Spanish 223)	88	58	43	40	46
Biling Spec Ed 882				6	10
Biling Spec Ed. Cert. 881				2	1
Biochemistry 437	9	10	11	9	7
Biology 4CF (was 436)	38	32	29	31	25
Biomedical Engineering BME			3	9	23
Chemical Engineering Adv. Cert. FA2				2	1
Chemical Engineering FAA (was 611)	16	11	15	26	22
Chemistry 438 (was 446)	13	21	15	11	11
Chemistry Ed. Cert. 866/877 (was 23G)				2	15
Child Education Cert. 905				53	167
Civil Engineering FAB (was 612)	86	80	78	97	101
Civil Engineering Adv. Cert. FA2		1	2	2	1
CLAS Grad. Non-degree 399		424	196	186	179
Computer Science FAF (was 616)	261	234	198	148	123
Computer Science Adv. Cert. FA6					1
Creative Writing 115	76	103	89	101	106
Dis. Child Ed. Grade 1-5 896					45
Dis. Mid. Child Ed. Grade 5-9 893					73
Dis. Mid. Child Ed. 892					59
Dis. Child Ed. 895					78
Early Childhood Education Cert. 898				3	2
Early Childhood Education 899 (was 2B0 & 220)	160	150	113	143	100

NOTE: In Spring 2000, CCNY converted to CUNY's SIMS system. CCNY majors were recoded. Changes are shown.

In Fall 2002, the Education majors were recoded. All changes are shown. In Fall 2003, new majors were added.

¹The number following the name of major is its City College code.

²Table includes non-degree and permit students.

Source: Fall 1999-2003; CUNY Show Tapes (electronic data files)

Table 35: Graduate (Masters and Certificate) Students by Major, Fall 1999-2003¹⁻²

	1999	2000	2001	2002	2003
Economics 3EB & 352	32	17	31	48	55
Education Non-matric 299		186	513	977	509
Electrical Engineering FAC (was 613)	46	49	82	101	114
Electrical Engineering Adv. Cert. (FA3)		1			
Elementary Education 906 (was 22B)	120	61	78	163	118
Engineering Management Adv. Cert. 610			1		1
English 7-12 Cert. 858				52	106
English AAD (was 114)	25	20	15	19	22
English BA/MA 114			9	8	4
English Educ Adv. Cert. 857 (was 23B)		13	10	1	2
English Educ 7-12 859 (was BC2)		14	15	24	22
Environmental Education 253	14	16	10	3	2
ESL Teacher 885 (was 230)		28	32	42	46
English Speakers Other Langs (Cert. ESL) 884				8	93
Film & Video 118		1			
Geology 4CI (was 439)	12	9	12	12	15
Graduate Engineering Non-matrices 698	11		31	47	46
History CEF (was 356)	29	39	32	33	33
History BA/MA 35F		1		3	1
International Relations 357	64	75	71	76	120
Language & Literacy 116	17	5	2	2	1
Lit. Birth to 6 (EDUC) 912	96	37	52	66	65
Literacy Birth-6 (Cert.) 911				2	3
Literacy 5-12 909				13	26
Literacy 5-12 Cert. 908				4	1
Math DD2 (was 442)	30	20	14	25	32
Math 4Yr B/MA 4DB					2
Math Grade 7-12 849 (was B42)		44	34	44	30
Mechanical Engineering Adv. Cert. FA4			1	1	
Mechanical Engineering FAD (was 614)	35	48	52	75	72
Media Arts MAP		19	41	43	44

NOTE: In Spring 2000, CCNY converted to CUNY's SIMS system. CCNY majors were recoded. Changes are shown.

In Fall 2002, the Education majors were recoded. All changes are shown. In Fall 2003, new majors were added.

¹The number following the name of major is its City College code. Includes non-degree students.

² Table includes non-degree and permit students.

Source: Fall 1999-2003; CUNY Show Tapes (electronic data files)

Table 35: Graduate (Masters and Certificate) Students by Major, Fall 1999-2003¹⁻²

	1999	2000	2001	2002	2003
Mid. School Sci. Ed. 270/271					20
Mid. School Math Ed. 273/274					25
Music 14E (was 145)	21	20	21	27	27
Physics 443	8	10	7	12	4
Psychology CF2 & 36B (was 362)	78	81	77	94	108
School Admin. & Supervision MSED 250	106	75	62	66	61
School Dist. Admin. 2EF		10	17	15	11
School Admin. & Super Adv. Cert. BE0				9	6
School Psychologist 256	1				
Science Educ. Bio. Adv. Cert. 864/879 (was 23G)		27	14	12	70
Science Educ. Chem. 867 (was 237)					1
Science Educ. Chem. Adv. Cert. 866/877 (was 23G)				2	15
Science Educ. Math Adv. 851 (was 24B)		2	2	12	173
Science Educ. Physics 871					4
Science Educ. Physics Cert. 870					8
Secondary Educ Bio. 865 (was 237)	20	1	8	12	19
Secondary Educ Science EAS 869 (was 237)				1	
Secondary Educ Science EAS Cert. 873 (was 23G)				3	8
Secondary Educ Social Studies 853 (was B34 & 234)	22	18	24	8	18
Secondary Educ Social Studies Adv. 855 (was 23D)			1	2	1
Social Studies Cert. 852					34
Sociology CFC (was 363)	39	35	29	22	22
Spanish 24A (was 132)	33	12	19	23	34
Special Education (Mid. Child) 893 (was 245)	72	109	86	149	73
Special Education (Emotional) 225	89				
Special Education (Intellectual) 226	56				
Technology Education 290	4				
Theater 146	51				
Graduate Education Tuition Waiver 991	218				
Unclassified Graduate Education 990	4				
Undeclared 999	319	534		17	8
Urban Design 512	42	10	13	12	13
Total	2,647	2,904	2,416	3,428	3,614

NOTE: In Spring 2000, CCNY converted to CUNY's SIMS system. CCNY majors were recoded. Changes are shown.

In Fall 2002, the Education majors were recoded. All changes are shown. In Fall 2003, new majors were added.

¹The number following the name of major is its City College code. Includes non-degree students.

² Table includes non-degree and permit students.

Source: Fall 1999-2003; CUNY Show Tapes (electronic data files)

Table 36: Graduate (Masters and Certificate) Degrees by Major, 1999-2003¹

	1999	2000	2001	2002	2003
Applied Urban Anthropology 35A (was 351)	3		2	2	2
Art 11A (was 111)	5	9	2	6	5
Art MFA 112	11	10	11	13	8
Art K-12 863 (was 23A)		2	7	6	5
Bilingual Child Educ. Cert. 902					1
Bilingual Creole 228	1				
Bilingual Educ. 903 (was Bilingual Spanish 223)	63	50	54	23	25
Bilingual Spec. Educ. 882					1
Biochemistry 437	5	2	4	5	
Biomed Engineering BME				1	
Biology 4CF (was 436)					7
Chemical Engineering FAA (611)	8	7	7	4	8
Chemistry 438 (was 438 & 446)	9	1	5	8	5
Childhood Education 906 (was Elementary 22B & 221)	41	59	47	54	80
Civil Engineering FAB (612)	33	19	29	23	24
Computer Science FAF (was 616)	80	94	91	85	84
Creative Writing 115	14	11	21	15	23
Alt Crt: Childhood Educ– Trans B 905					4
Early Childhood Education 899 (was 2B0 & 220)	81	77	55	65	80
Economics 3EB (was 353)	10	6	5	15	11
Electrical Engineering FAC (was 613)	27	18	18	31	37
Electrical Engineering Adv. Cert. FA3			1		
English ADD (was 114)	7	7	13	11	11
English 7-12 859 (was BC2)		3	8	42	22
English Cert. 7-12 858					3
ESL Cert. 884					1
ESL Teacher 885 (was 230)		9		14	5
English Educ. Adv. Cert. 857 (was 23B)		1			
Environmental Education 253	4	1	5	14	4
Geology 4CI (was 439)	2	1		2	2
History CEF (was 356)	7	1	4	4	7
Information Systems 617	1				
International Relations 357	18	8	9	32	24

¹The number following the name of major is its City College code.

Sources: 1999/00 - 2002/03 Graduation Tapes (electronic data files)

Table 36: Graduate (Masters and Certificate) Degrees by Major, 1999-2003¹

	1999	2000	2001	2002	2003
Language & Literacy 116	4	2	2		1
Literacy 5-12 909					1
Literacy Birth - 6 912 (was Reading Teacher 252)	26	37	47	26	32
Math DD2 (was 442)	5	11	5	5	6
Math 7-12 849 (was B42)		16	12	11	23
Mechanical Engineering FAD (was 614)	24	14	11	18	17
Media Arts Prod. MAP		2	25	17	18
Music 14E	2	1	5	9	4
Physics 443	5			9	3
Psychology CF2 (was 362)	11	10	16	31	29
School Admin. & Super. MSED 250	42	28	24	30	22
School Admin. & Super. Adv. Cert. BEO			4	3	3
School Dist. Admin. 2EF		6	1		1
School Psychology 256	5	2		1	1
Science Educ. Biology 865					4
Science Educ. Cert. 873/875/877/879 (was 23G)		3			1
Secondary Education Art 231	7	2			
Secondary Education English 232	18	3			
Secondary Education Math 242	27	4			
Secondary Education Science 865/867/869/871 (was 237)	8	6	11	11	
Secondary Educ. Soc. Studies 853 (was B34 & 234)	8	13	4	7	6
Sociology CFC (was 363)	3	5	5	5	8
Spanish 24A (was 132)	2		2	11	6
Special Education Bilingual 5-9 893 (was 245)	36	53	105	81	113
Special Education Emotional 225	53	9			
Special Education Intellectual 226	26	1			
Speech Pathology & Audiology 123	1		1		
Technology Education 290	3	1			
Urban Design 512	5	8	6	16	12
Total	765	645	688	776	800

¹The number following the name of major is its City College code.

Sources: 1999/00 - 2002/03 Graduation Tapes (electronic data files)

Table 37: Graduate Students Areas of Study by Gender and Ethnicity/Race, Fall 2003

		Amerind	Asian	Black	Hispanic	White	Total
Architecture			6	1	5	7	19
	Females		2		3	1	6
	Males		4	1	2	6	13
CLAS Non-matric			33	57	58	31	179
	Females		14	27	38	20	99
	Males		19	30	20	11	80
Education		2	365	714	753	334	2,168
	Females	1	250	498	541	189	1,479
	Males	1	115	216	212	145	689
Engineering		1	238	66	83	70	458
	Females		54	11	10	14	89
	Males	1	184	55	73	56	369
Engineering Non-Matric			9	17	14	6	46
	Females		1	2	6	1	10
	Males		8	15	8	5	36
Humanities & Arts			72	66	75	119	332
	Females		45	31	50	61	187
	Males		27	35	25	58	145
Sciences			30	26	17	21	94
	Females		16	9	5	9	39
	Males		14	17	12	12	55
Social Science			69	87	83	71	310
	Females		43	48	51	42	184
	Males		26	39	32	29	126
Undeclared		1	2		4	1	8
	Females	1	1		2		4
	Males		1		2	1	4
	Total	4	824	1,034	1,092	660	3,614

Source: Fall 2003; CUNY Show Tape (electronic data file)

Table 38: New Graduate Students by Age and Gender, Fall 2003¹

Age in Years	Median: 27		Mode: 23		Total
	Female		Male		
20-22	52	12.9%	24	6.6%	76
23-24	81	20.1%	76	21.1%	157
25-29	147	36.6%	107	29.6%	254
30-44	93	23.1%	103	28.5%	196
45-64	28	7.0%	50	13.9%	78
>65	1	0.2%	1	0.3%	2
Total	402	100.0%	361	100.0%	763

All Graduate Students by Age and Gender, Fall 2003¹

Age in Years	Median: 31		Mode: 27		Total
	Female		Male		
=<19	1	0.0%			1
20-22	70	3.3%	31	2.0%	101
23-24	263	12.5%	171	11.3%	434
25-29	644	30.7%	436	28.7%	1,080
30-44	774	36.9%	622	41.0%	1,396
45-64	334	15.9%	250	16.5%	584
>65	11	0.5%	6	0.4%	17
Unknown			1	0.1%	1
Total	2,096	100.0%	1,517	100.0%	3,614

¹Includes non-degree and permit students.

Source: Fall 2003; CUNY Show Tape (electronic data file)

Table 39: Transfer Students by Type of Feeder Institution, Fall 1994-2003

	1994	1995	1996	1997	1998	1999	2000	2001	2002	2003
CUNY 4-Year Colleges	100	82	74	93	85	116	120	134	141	145
CUNY 2-Year Colleges with Degrees	232	222	232	227	219	275	112	109	88	144
CUNY 2-Year Colleges without Degrees	166	179	162	161	153	207	167	162	205	197
Non-CUNY 4-Year Colleges ¹	165	203	148	138	204	157	133	185	253	331
Non-CUNY 2-Year Colleges ²	34	34	26	18	59	50	58	74	95	118
Foreign Colleges	78	77	63	72	74	53	73	87	127	162
Other Sources ³								98	148	48
Unknown	57	72	52	73	44		135	10	13	83
Total	832	869	757	782	838	858	798	859	1,070	1,228

¹New York State 4-Year (Private/Public) Colleges=184, Outside NYS=161, and SUNY=43.

²Outside/Inside New York State 2-year (Private/Public) Colleges=136. SUNY 2-year Colleges=42.

³In 2003, 39 CCNY students were coded "Internal Transfer" student. They went from Non-degree to degree status.

Sources: Fall 1994-2003; CUNY Show Tapes (electronic data files)

The City College of New York Office of Institutional Research

Table 40: Transfer Students by Feeder Colleges, Fall 2003

ORIGINS	N
BORO OF MANHATTAN	150
LAGUARDIA	53
BRONX	46
HUNTER	44
NEW YORK CITY TECHNICAL COLLEGE	44
CCNY INTERNAL TRANSFER	40
QUEENSBORO	37
KINGSBORO	29
HOSTOS	28
BARUCH	23
NEW YORK UNIVERSITY	19
BROOKLYN	18
WESTCHESTER COMMUNITY	17
LEHMAN	16
JOHN JAY	14
QUEENS	12
NON ACCREDITED COLLEGE	12
YORK	11
NASSAU COMMUNITY	10
POLYTECHNIC INSTITUTE NEW YORK	10
FOREIGN	105
OTHERS	490
Total	1,228

Source: Fall 2003; CUNY Show Tape (electronic data file)

The City College of New York Office of Institutional Research

Table 41: Transfer Students by Area of Study by Ethnicity/Race and Gender, Fall 2003

		Amerind	Asian	Black	Hispanic	White	Total
Architecture			10	9	17	23	59
	Females		5	4	7	10	26
	Males		5	5	10	13	33
Biomed					1		1
	Females				1		1
CWE			4	53	38	21	116
	Females		4	41	34	15	94
	Males			12	4	6	22
CUNY BA					2		2
	Females				1		1
	Males				1		1
Education			6	29	37	14	86
	Females		4	27	29	8	68
	Males		2	2	8	6	18
Engineering		2	73	70	77	36	258
	Females		19	14	16	8	57
	Males	2	54	56	61	28	201
Humanities & Arts		1	25	25	47	37	135
	Females	1	14	14	15	16	60
	Males		11	11	32	21	75
Sciences			36	54	61	38	189
	Females		13	32	35	20	100
	Males		23	22	26	18	89
Social Science			5	12	27	4	48
	Females		5	9	20	2	36
	Males			3	7	2	12
Undeclared			68	71	122	73	334
	Females		31	33	60	35	159
	Males		37	38	62	38	175
	Total	3	227	323	429	246	1,228

Source: Fall 2003; CUNY Show Tape (electronic data file)

The City College of New York Office of Institutional Research

Table 42: New Transfer Students by Age and Gender, Fall 2003

Median: 24

Mode: 21

Age in Years	Female		Male		Total
=<19	35	5.8%	34	5.4%	69
20-22	158	26.2%	187	29.9%	345
23-24	99	16.4%	105	16.8%	204
25-29	151	25.1%	156	24.9%	307
30-44	139	23.1%	124	19.8%	263
45-64	19	3.2%	19	3.0%	38
=>65	1	0.2%	1	0.2%	2
Total	602	100.0%	626	100.0%	1,228

Source: Fall 2003; CUNY Show Tape (electronic data file).

Table 43: Gender and Ethnicity/Race of Faculty and Staff, 07/01/02-06/30/03

Full/Part-time Faculty:	Black	Hispanic	Asian American	Native American	White	Non-Resident Alien	Total
Full-time (Male)	34	13	33	1	238	9	328
Full-time (Female)	21	15	7		97		140
Full-time Total	55	28	40	1	335	9	468
Part-time (Male)	37	27	18	2	167	20	271
Part-time (Female)	51	26	6	1	119	16	219
Part-time Total	88	53	24	3	286	36	490
Full/Part-Time Total ¹⁻²	143	81	64	4	621	45	958

Tenured Faculty:

Full-time (Male)	27	11	20	1	181	1	241
Full-time (Female)	18	9	6		65		98
Total	45	20	26	1	246	1	339

Administration:

Executive/Managerial (Male)	13	4	6		30	2	55
Executive/Managerial (Female)	17	8	1		21		47
Professional/Non-Faculty (Male)	12	8	10	1	13	4	48
Professional/Non-Faculty (Female)	23	11	7		21	4	66
Total	65	31	24	1	85	10	216

Staff:

Clerical/Secretarial (Male)	2	4	1		2		9
Clerical/Secretarial (Female)	85	25	2		10		122
Skilled Crafts (Male)	1	4			35		40
Skilled Crafts (Female)			1				1
Technical/Paraprofessional (Male)	8	6	11		18		43
Technical/Paraprofessional (Female)	10	2	2		9		23
Service/Maintenance (Male)	78	24			14	1	117
Service/Maintenance (Female)	29	4	1				34
Total	213	69	18		88	1	389

CUNY Governing Board³:

Male	1	1	1		7		10
Female	1	3			1		5
Total	2	4	1		8		15

¹Excludes Research Assistants and Exec-Adm-Mgr Academic rank tenure (non-teaching) positions

²15 faculty with dual appointments are counted twice.

³Sources: CUNY web site: <http://www1.cuny.edu/abtcuny/trustees/bios/allbios.htm> & the CCNY Affirmative Action Office

Sources: CUPS IPEDS/EE06 Report for Fiscal Year 7/1/02 to 6/30/03 (run 10/28/03) & the CCNY Affirmative Action Office

The City College of New York Office of Institutional Research								
Table 44: Faculty by Department, 07/01/02-06/30/03								
		Associate	Assistant	Continuing Ed		Graduate		
Department	Adjunct	Professor	Professor	Teachers¹	Professor	Assistants	Other²	Total³
Adult & Continuing Ed	1			71				72
Anthropology		1			4		1	6
Architecture	39	1	3		13		1	57
Art	39	5	6		5		1	56
Biology	3	5	5		10	6	3	32
BioMed School	50	8	4		16		5	83
Biomedical Engineering		2	2		1			5
Civil Engineering		4	6		6	6		22
Computer Science	1	7	4		11	5	1	29
Comm. Film & Video	21	5	3		1		1	31
Chemical Engineering		1	2		8			11
Chemistry	3	4	5		13	14	2	41
College Now	16							16
Center for Worker Education	51		3		1			55
Electrical Engineering		9	4		13	6		32
Earth Atmospheric Science		1	2		4	1		8
Economics	2		4		7		1	14
Education: Childhood	38	3	10		3		1	55
Education: Leadership, Foundations, etc.	13	3	1		5			22
Education: Secondary	4	3	6				3	16
English (includes ESL)	61	10	6		16		3	96
Foreign Languages	21	2	6		9		2	40
Freshman Year	6							6
Gateway	6							6
History	10	8	1		10		2	31
Library		11	1		1		4	17
Mechanical Engineering		3	3		11	6		23
Math	26	8	3		21		3	61
Music	13	6	5		3			27
Political Science	3	2	4		5		1	15
Philosophy	7	2	1		3			13
Physics	2	4	4		16	9	1	36
Psychology		8	4		15	8		35
SEEK	5	2	2				2	11
Sociology	3	8	2		4		2	19
Summer Session		1						1
Total	444	137	112	71	235	61	40	1,100
¹ Not included in Table 43.								
² "Other" includes Instructors, Lecturers and Substitutes.								
³ 15 faculty with dual appointments in the EE06 report are listed <i>once</i> in their main department in this table.								
Sources CUPS Miniflat file (run 06/23/03), the Education Department for its new departments' list, the CUPS IPEDS EE06 Report Fiscal Year 7/1/02 - 6/30/03 (run 10/28/03) & the CUPS History database.								

The City College of New York Office of Institutional Research

TABLE 45: Financial Aid, 2003-2004 (\$'s in thousands)

FEDERAL AID	2003-2004	
	N	\$'s
Pell Grant	4,108	\$13,768
Federal Work Study (includes Summer)	1,697	\$2,293
Perkins Loan (formerly NDSL)	801	\$1,934
Supplemental Educational Opportunity Grant (SEOG)	1,403	\$682
Federal Direct Loan (formerly Stafford Loan)	2,106	\$8,818
Subtotal	10,115	\$27,495
STATE and CITY AID		
SEEK (includes Books & Fees)	985	\$726
Tuition Assistance Program (TAP) ¹	4,887	\$13,685
CUNY Supplemental Assistance Program (CUSTA)	417	\$39
Aid for Part-time Study (APTS)	326	\$190
Part-Time TAP	186	\$292
Vallone Scholarship (formerly New York City Merit Scholarships) ²	698	\$698
High Five Scholarships	9	\$90
Safety Net	2	\$0.45
Honors College Scholarship	76	\$360
Subtotal	7,586	\$16,080
GRADUATE AID		
Assistantships & Fellowships	54	\$108
Subtotal	54	\$108
Grand Total	17,755	\$43,683

¹Pre-certification estimates.

²First year awarded 1998/99 late in fall semester.

Source: CCNY Financial Aid Office (12/12/03)

TABLE 46: Financial Aid, 1999-2000 to 2003-2004 (\$'s in thousands)

	1999-2000		2000-2001 ²		2001-2002		2002-2003		2003-2004	
	N	\$'s	N	\$'s	N	\$'s	N	\$'s	N	\$'s
FEDERAL AID										
Pell Grant	4,501	\$9,052	4,186	\$8,828	4,065	\$9,502	3,893	\$12,527	4,108	\$13,768
Federal Work Study (includes Summer)	1,449	\$1,917	1,311	\$1,873	1,636	\$1,906	1,395	\$1,664	1,697	\$2,293
Perkins Loan (formerly NDSL)	964	\$1,725	650	\$1,336	758	\$1,461	740	\$1,532	801	\$1,934
Supplemental Educational Opportunity Grant (SEOG)	1,152	\$571	1,150	\$719	1,367	\$675	1,300	\$572	1,403	\$682
Federal Direct Loan (formerly Stafford Loan)	2,586	\$10,352	2,214	\$9,036	2,021	\$7,837	1,959	\$7,912	2,106	\$8,818
Subtotal	10,652	\$23,617	9,511	\$21,792	9,847	\$21,381	9,287	\$24,207	10,115	\$27,495
STATE AID										
SEEK (includes Books & Fees)	945	\$657	937	\$804	853	\$738	830	\$690	985	\$726
Tuition Assistance Program (TAP) ¹	5,208	\$11,505	4,673	\$10,175	4,087	\$9,181	4,184	\$9,276	4,887	\$13,685
CUNY Supplemental Assistance Program (CUSTA)	645	\$129	452	\$63	245	\$24	275	\$27	417	\$39
Aid for Part-time Study (APTS)	378	\$119	215	\$68	187	\$54	294	\$178	326	\$190
Part-Time TAP							65	\$133	186	\$292
New York City Merit Scholarships	450	\$586	453	\$331	500	\$670	613	\$614	698	\$698
High Five Scholarships									9	\$90
Safety Net									2	\$0.45
Honors College Scholarships					22	\$230	56	\$235	76	\$360
Subtotal	7,626	\$12,996	6,730	\$11,441	5,894	\$10,897	6,317	\$11,153	7,586	\$16,080
GRADUATE AID										
Assistantships & Fellowships	36	\$97	27	\$85	40	\$86	54	\$108	54	\$108
Subtotal	36	\$97	27	\$85	40	\$86	54	\$108	54	\$108
Grand Total	18,314	\$36,710	16,268	\$33,318	15,781	\$32,364	15,658	\$35,468	17,755	\$43,683

¹Pre-certification estimates.

²Corrected numbers for SEOG Grants dollars

Source: CCNY Financial Aid Office (12/12/03).

Table 47: Tax-Levy Operating Budget 2003-2004 (Numbers in thousands)

	Personnel Service Regular	Personnel Service Adjunct	Personnel Service Temporary	Personnel Service Summer	Other Than Personnel Service	Total
Instruction	\$29,842.0	\$3,988.0	\$2,362.0	\$1,257.0	\$2,687.0	\$40,136.0
Instructional Support	\$10,406.0					\$10,406.0
Extension & Public Service	\$164.0		\$98.0			\$262.0
Organized Research	\$490.0		\$255.0		\$203.0	\$948.0
Organized Activities	\$454.0		\$62.0		\$81.0	\$597.0
Library	\$1,792.0		\$308.0		\$689.0	\$2,789.0
Student Services	\$3,463.0		\$861.0		\$443.0	\$4,767.0
Maintenance & Operations	\$7,417.0				\$1,545.0	\$8,962.0
General Administration	\$3,956.0		\$366.0		\$714.0	\$5,036.0
General Institutional Services	\$5,664.0		\$452.0		\$2,359.0	\$8,475.0
Subtotal	\$63,648.0	\$3,988.0	\$4,764.0	\$1,257.0	\$8,721.0	\$82,378.0
BioMed/Med School	\$6,769.0	\$643.0	\$171.0	\$134.0	\$1,600.0	\$9,317.0
SEEK	\$358.0		\$176.0		\$21.0	\$555.0
Center for Worker Education	\$928.0	\$493.0	\$90.0		\$12.0	\$1,523.0
Early Retirement Costs ²						377.0
Grand Total	71,703.0	5,124.0	5,201.0	1,391.0	10,354.0	94,150.0

Sources: CCNY Office of Finance and Management and the Office of Fiscal Planning (04/19/04)

Graph 47: Tax-Levy Operating Budget 2003-2004 (numbers in thousands)

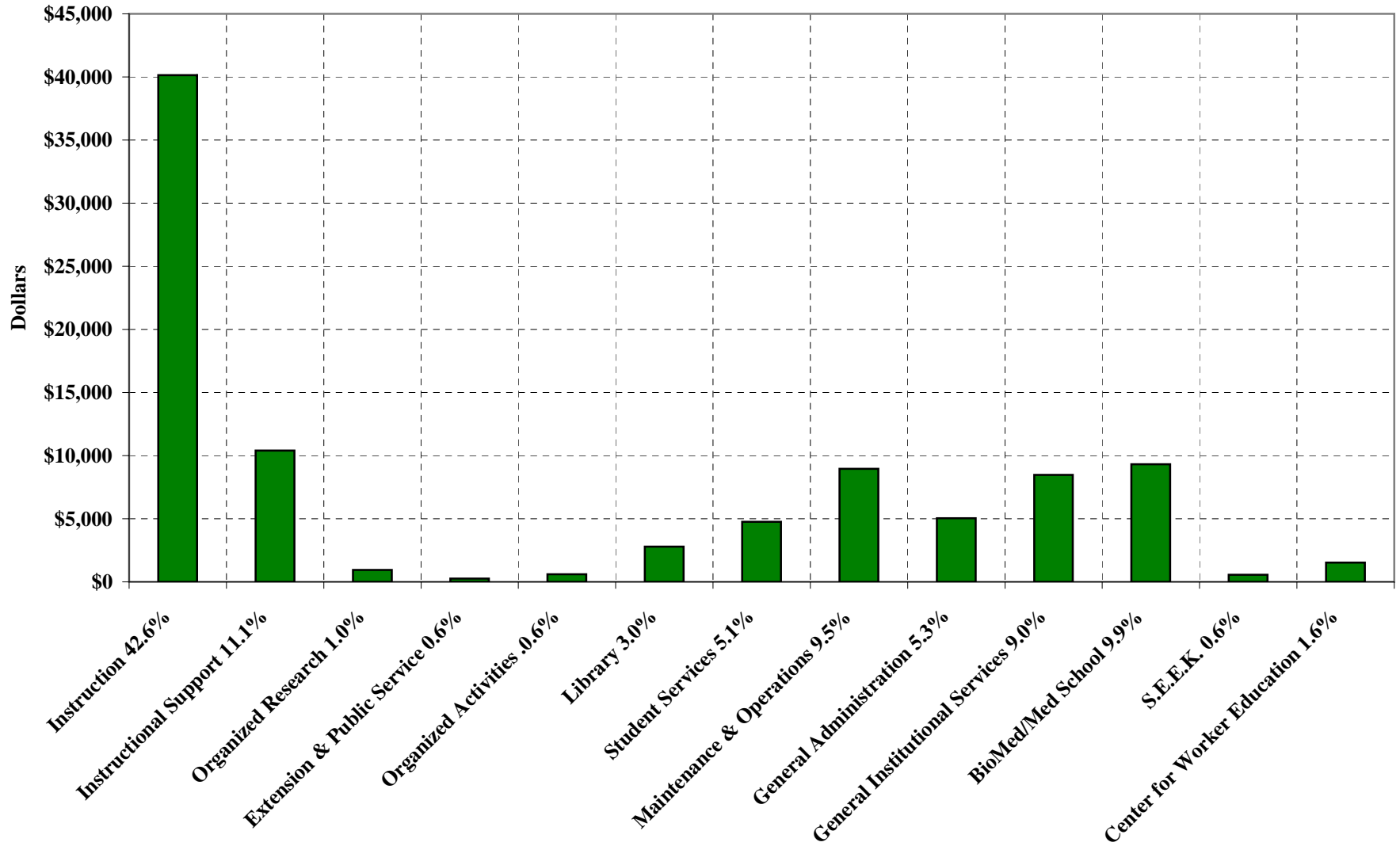


Table 48: Revenues and Expenditures, 2002-2003¹

CURRENT REVENUES	Total
Tuition and Fees	\$28,808,000
Government Appropriations	
State (excludes TAP, STAP)	\$88,139,000
Local	
Government Grants and Contracts	
Federal (includes PELL)	\$34,814,676
State (excludes TAP & STAP)	\$10,505,306
Local	\$7,520,125
Private Gifts, Grants and Contracts	\$15,841,414
Endowment Income	\$5,000
Auxiliary Enterprises	\$592,000
Other Sources	\$4,124,000
Current Revenues Total	\$190,349,521

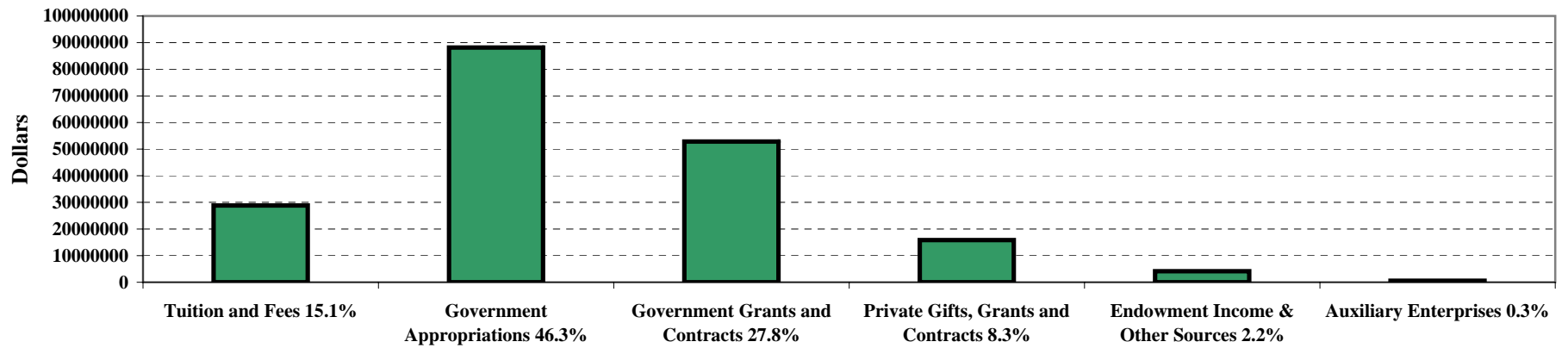
CURRENT EXPENDITURES	Total
Instruction	\$86,604,883
Research	\$23,703,670
Public Service	\$989,000
Academic Support (Includes Libraries)	\$11,833,296
Student Services	\$10,135,415
Institutional Support	\$19,694,133
Operation and Maintenance of Plant	\$17,828,000
Depreciation	\$21,000
Scholarships and Fellowships	\$10,473,000
Mandatory Transfers	\$0
Other expenditures	\$460,000
Subtotal	\$181,742,397

Auxiliary Enterprises	\$761,000
Current Expenditures Total	\$182,503,397

¹NOTE: The amounts reported for revenues and expenditures are a combination of CUNY Tax-levy and Research Foundation financial data. In the fiscal year 2001-2002, CUNY implemented the Governmental Accounting Standards Board (GASB) Statements 34 and 35 which required that tuition and fee revenues be reported net of any scholarship discounts and allowances rather than gross (as in previous years). GASB also required a reduction in the amount of scholarship and fellowship expenses to be reported. (The Medical School and the Center for Worker Education are included in these numbers.)

Source: Fall 2003 Financial IPEDS Finance - Public Institutions Sections B-D (website) prepared by CUNY Accounting

Graph 48: Revenues, 2002-2003



Graph 48: Expenditures, 2002-2003

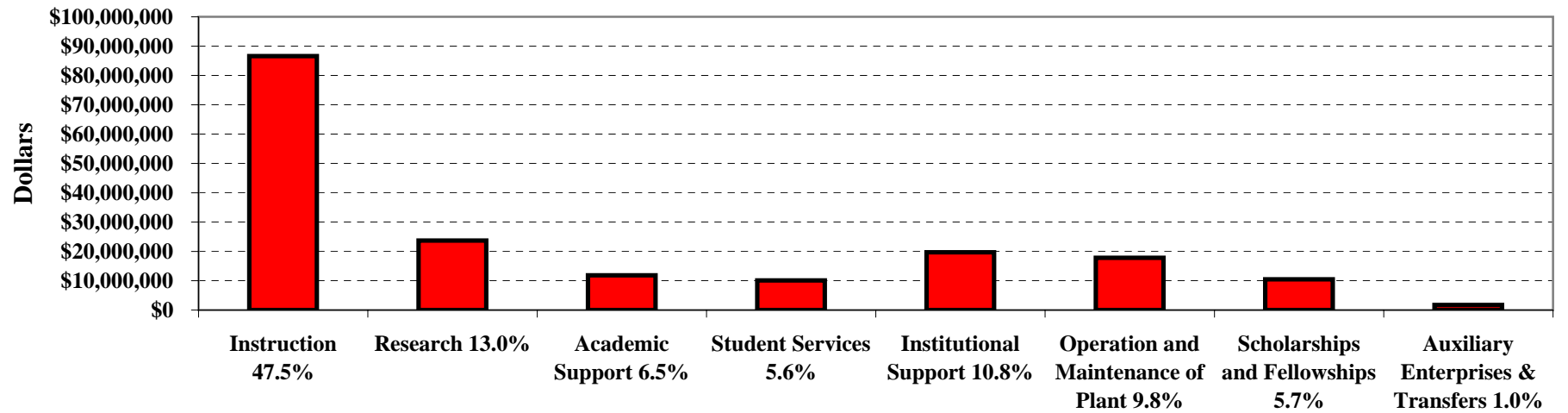


Table 49: Total Revenues and Expenditures, 1998-99 through 2002-03¹

CURRENT REVENUES	1998-99	1999-00	2000-01²	2001-02	2002-03
Tuition and Fees	\$33,340	\$32,679	\$33,646	\$22,938	\$28,808
Government Appropriations					
State (excludes TAP, STAP)	\$74,238	\$77,356	\$79,060	\$96,221	\$88,139
Local	\$529	\$134	\$171		
Government Grants and Contracts					
Federal (includes PELL)	\$11,566	\$10,350	\$28,810	\$30,512	\$34,815
State (excludes/includes TAP & STAP)	\$6,420	\$7,161	\$9,145	\$9,585	\$10,505
Local	\$7	\$38	\$3,747	\$14,426	\$7,520
Private Gifts, Grants and Contracts	\$4,453	\$4,670	\$9,757	\$2.1	\$15,841
Endowment Income	\$226	\$612	\$739	(\$717.6)	\$5
Auxiliary Enterprises	\$471	\$425	\$452	\$667	\$592
Other Sources	\$2,491	\$1,683	\$4,716	\$4,451	\$4,124
Current Revenues Total	\$133,741	\$135,108	\$170,243	\$178,085	\$190,349
CURRENT EXPENDITURES	1998-99	1999-00	2000-01²	2001-02	2002-03
Instruction	\$68,328	\$70,039	\$67,434	\$76,191	\$86,605
Research	\$1,156	\$776	\$19,018	\$20,217	\$23,704
Public Service	\$436	\$455	\$4,347	\$7,051	\$989
Academic Support (Includes Libraries)	\$4,866	\$5,204	\$11,956	\$10,129	\$11,833
Student Services	\$5,961	\$6,194	\$8,064	\$8,812	\$10,135
Institutional Support	\$14,425	\$16,119	\$17,620	\$21,030	\$19,694
Operation and Maintenance of Plant	\$16,719	\$15,784	\$17,393	\$17,270	\$17,828
Scholarships and Fellowships	\$20,868	\$19,622	\$23,203	\$10,317	\$10,473
Mandatory Transfers	\$62	\$53	\$46	\$49	
Non-mandatory Transfers	\$38				
Other expenditures					\$460
Depreciation				\$464	\$21
Subtotal	\$132,859	\$134,246	\$169,081	\$171,066	\$181,742
Auxiliary Enterprises	\$489	\$345	\$431	\$482	\$761
Current Expenditures Total	\$133,348	\$134,591	\$169,512	\$171,548	\$182,503

¹\$'s in thousands.

²NOTE: Starting in 2000-01, the amounts reported for revenues and expenditures are a combination of CUNY Tax-levy and Research Foundation financial data.

Sources: 1998-02 Financial IPEDS Section "L"; 2001-03 Sections B-D (website) prepared by CUNY Accounting

The City College of New York Office of Institutional Research

TABLE 50: Sponsored Programs, 2002-2003

FEDERAL	2002-2003
National Science Foundation	\$9,690,804
National Institute of Health	\$9,554,315
Department of Energy	\$223,432
Department of Defense	\$2,441,459
Department of Education	\$1,665,787
National Aeronautics & Space Administration	\$2,171,733
Other Federal Agencies	\$3,539,862
Total Federal	\$29,287,392
STATE/LOCAL/OTHER	
New York State Agencies	\$4,031,735
New York City Agencies	\$9,053,052
Corporations and Foundations	\$4,520,911
Total State/Local/Other	\$17,605,698
Grand Total	\$46,893,090

Source: CCNY Office of Research Administration (12/08/03)

Graph 50: Sponsored Programs, 2002-2003

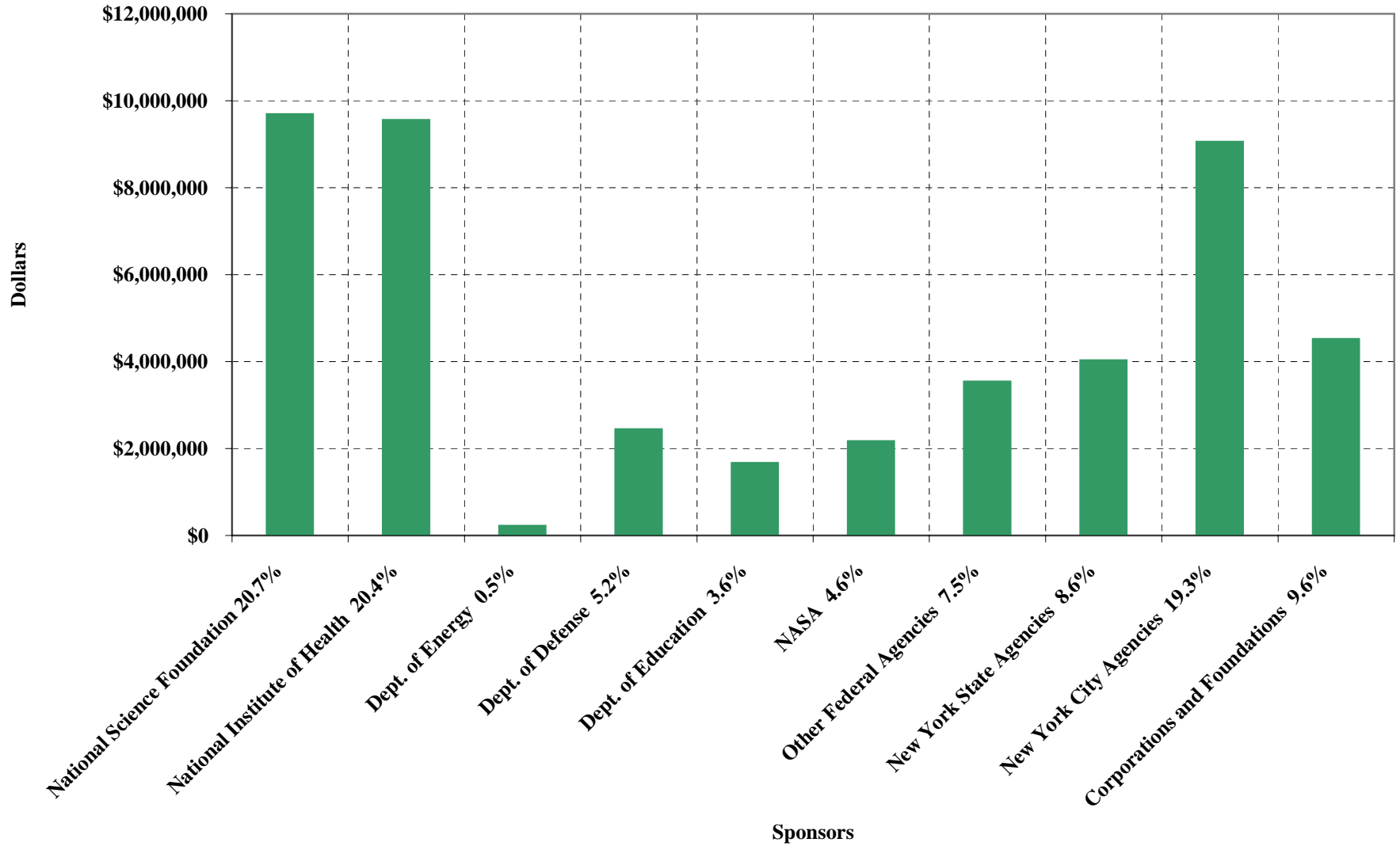


TABLE 51: Sponsored Programs, 1998-99 through 2002-03¹

FEDERAL:	1998-99	1999-00	2000-01	2001-02	2002-03
National Science Foundation	\$3,982	\$7,688	\$5,422	\$4,695	\$9,691
National Institute of Health	\$4,971	\$5,096	\$7,727	\$9,070	\$9,554
Department of Energy	\$1,019	\$854	\$277	\$394	\$223
Department of Defense	\$944	\$1,390	\$734	\$2,074	\$2,441
Department of Education	\$558	\$1,922	\$2,226	\$1,223	\$1,666
National Aeronautics & Space Administration	\$4,256	\$1,986	\$2,393	\$1,821	\$2,172
Other Federal Agencies	\$840	\$627	\$1,164	\$3,796	\$3,540
Total Federal	\$16,570	\$19,563	\$19,943	\$23,073	\$29,287
STATE/LOCAL/OTHER					
New York State Agencies	\$1,746	\$1,919	\$2,248	\$3,134	\$4,032
New York City Agencies	\$3,266	\$3,202	\$4,233	\$4,433	\$9,053
Corporations and Foundations	\$4,617	\$3,535	\$4,175	\$4,871	\$4,521
Total State/Local/Other	\$9,629	\$8,655	\$10,656	\$12,438	\$17,606
Grand Total	\$26,199	\$28,219	\$30,599	\$35,511	\$46,893

¹The numbers are in thousands and rounded.

Source: CCNY Office of Research Administration (1998/99 - 2002/03)

Data Sources and Interpretation of the Statistical Tables

CITY FACTS information comes from several different sources:

A: The Show Tape Statistical tables in Section I are based on information taken from the electronic Show Tape file. It represents the College's enrollment at the end of the third week of each semester. It is the CUNY Central Office's official enrollment statistical source in preparing reports for the New York State Education Department (NYSED), the National Center for Education Statistics (NCES), the Statistics Integrated Postsecondary Education Data System (IPEDS) as well as reports for other government agencies. CUNY's statistical treatment of enrollment and course data for the Show Tape follows:

1) Students who registered, but withdrew prior to the end of the third week in the semester are excluded. Changes made by Records and Registration after the third week are not reflected in these tables.

2) Permit students, i.e., students who are taking classes at CCNY, but are getting their degrees from another CUNY college, are included in the computation of full-time equivalent (FTE) students and are included in the CCNY enrollment head count. CUNY credits them to their home college. Thus their number differ from CCNY's.

3) CUNY BA students are handled the same way as Permit students.

4) Class standing is based on total cumulative credits earned prior to the present semester. This creates the following groups of students:

Freshmen	0-27.5
Sophomores	28-60.5
Juniors	61-93.5
Seniors	94+
Graduate	0-36+

Non-degree students are put into three groups: Lower, Upper and Graduate. They are in the head count.

5) When the degree indicator is missing, the student is classified as non-degree.

6) When full- or part-time status is missing, the student is classified as part-time.

7) When the degree indicator shows the student is enrolled in a degree program, but class level is missing, the student is classified as a freshman.

8) Credits generated by undergraduate students in graduate courses are counted as graduate level credits in the computation of student FTEs and, conversely, credits generated by graduate students in undergraduate courses are counted as undergraduate credits.

9) Non-Resident Aliens: According to the field definitions for the Show Tape, there are two categories of Foreign Citizens and Non-Resident Aliens. Both of them are included in the Non-Resident Alien category in the IPEDS reports:

A Foreign Resident who pays non-resident tuition and is not eligible for TAP. (Includes any foreign student who has lived in New York for one year and/or has not been a permanent resident [green card holder] or applied for permanent residency at least one year prior to the start of the semester.)

A Foreign Resident who pays resident tuition and is not eligible for TAP. (For example, United Nations Personnel, Temporary Resident, Permanent Resident Pending, or Refugee Pending).

10) Doctoral students on campus are not included in the computation of head count or in credits generated, because these students are officially registered at the CUNY Graduate Center.

11) A student's curriculum major code is the only way to ascertain what division, school or program she/he is in. Lower Division students, however, do not have to declare a major until they have accumulated 60 credits. Many Upper Division students (transfers and readmits) take several weeks to complete the process of declaring a major. As a result, a number of undergraduate students are classified as "Undeclared" with respect to curriculum of choice.

12) Starting in Fall 2000, the CUNY/ACT Basic Skills Tests (CABS) began replacing the CUNY Skills Assessment (SKAT) tests. They are administered for fall admission to incoming students at individual colleges within CUNY. They are forwarded to CUNY to become part of the Show Tape. (Pass/fail cut-off scores are established by CUNY for these tests.) Prior to Fall 2001, these test scores determined whether or not an incoming student required remediation in one or more basic skill areas (reading, writing and mathematics). In Fall 2001, remediation was no longer available at the CUNY Senior Colleges. The CABS now are used for placement into courses. SAT as well as New York State Regents exams are used to exempt students from taking the CABS.

B: City College Graduation Tapes The Records and Registration Office each semester submits to the CUNY Central Office a data file of CCNY graduates. These tapes are the source for *CITY FACTS* tables and graphs showing our graduation information.

C: The Financial Aid Office Provides data on the number and size of awards to students.

E: The Affirmative Action Office Provides data on the ethnicity/race and gender of staff from the City University Personnel System (CUPS) IPEDS/EE06 Report (prior to 1999 the EEO6 Report was used).

F: The Finance and Management Office and the Fiscal Planning Office Provides budget information for the Tax-levy Operating budget.

G: The CCNY Office of Research Administration Provides information about grants administered through the City College Research Foundation.

H: The CUNY Office of Institutional Research and Analysis (OIRA) Since multiple admissions started in Fall 2002, this data comes from OIRA and the final CAS (new Freshman) and ASTA (new transfers students) tapes.

I: The CUNY SIMS System A database that includes the academic records of all CCNY students. SIMS, along with the CUNY Show Tape, are the key sources for conducting longitudinal studies, particularly in terms of tracking student cohorts over time and, to a limited extent, evaluating the effects of programs on academic success.

J. Integrated Postsecondary Education Data System (IPEDS) A U.S. Department of Education database collected by the U.S. Department of Commerce, Bureau of the Census, for the National Center for Education Statistics (NCES).

According to IPEDS:

A Non-Resident Alien is a person who is not a citizen or national of the United States who is in this country on a temporary basis, and does not have the right to remain indefinitely.

Resident Aliens who are not citizens or nationals of the United States who have alien registration receipt cards (Form I-551/I55), and who have been lawfully admitted for permanent residence are to be reported in the appropriate racial/ethnic categories along with United States citizens. (See "A: The Show Tape 8) Non-Resident Aliens." above.)

K. THE CHRONICLE OF HIGHER EDUCATION Web Page (<http://chronicle.merit.edu>)

Technical Note

Percentage Change

"Percentage change" used in the Summary is not the arithmetic difference between two percentages (e.g., 20% - 15% = 5%). It is the quantity based on the number of cases at two points in time and is calculated as follows:

% change **equals** (number of cases at time2 **minus** number of cases at time1) **divided by** number of cases at time1 **multiplied by** 100.

Class Status by Credits

LOWER DIVISION

Freshmen:

Lower 0-11.5

Upper 12-27.5

Sophomores:

Lower 28-44.5

Upper 45-60.5

UPPER DIVISION

Juniors:

Lower 61-77.5

Upper 78-93.5

Seniors:

Lower 94-110.5

Upper 111 or more

Production Note

Equipment and software used to produce *CITY FACTS*:

Dell OptiPlex GX400 with two hard drives & two Read/Write Optical drives

Word Professional 2000 for the text and index

Excel Professional 2000 for the tables and graphs

Kedit microcomputer ASCII editing software

WS_FTP95 software for mainframe EBCDIC to microcomputer ASCII file conversions

Netscape 6.2 for Internet research

Text Fonts: Times New Roman 8 to 12 points

SAS 8.1 statistics program

HP LaserJet 4050T with 20 MEGs of memory

academic year, 4, 11, 14
 Adjuncts by department, 13
 administrators, 13
 admitted & registered students, 2
 age of students, 8, 12, 13
 Alaskan Native, 1, 2
 American Indian, 1, 2
 Architecture, 7, 8, 11, 13
 Asians, 1, 2, 4, 13
 Bachelors, 4, 8, 13
 BioMed, 7, 9, 13, 14
 Black, 1, 2, 13
 budget, 14
 CCNY, 1, 2, 5, 6, 7, 8, 9, 11, 12, 14, 15
 Center for Worker Education (CWE), 6, 7, 8, 12
 Certificate, 11
 College of Liberal Arts & Science (CLAS), 11
 class level, 2
 Community (2-year) Colleges, 12
 continuing students, 2, 3
 countries of birth, 5
 CUNY, 2, 5, 7, 8, 11, 12, 14
 CWE, 7, 8, 12, 13
 degree, 2, 3, 4, 5, 6, 8, 10, 11, 12, 13
 Degrees Awarded, 4, 8
 departments, 4, 13
 Department of Education, 15
 Division/School, 4, 6, 8, 10, 11
 Education, 1, 4, 7, 8, 10, 11, 12, 13, 14
 Engineering, 6, 7, 8, 9, 11
 English, 5, 13
 enrollment, 1, 2, 3, 5, 6, 7, 10, 11
 Ethnicity/Race, 1, 2, 7, 10, 11, 12, 13
 expenditures, 14, 15
 faculty by department, 13
 feeder institutions (colleges), 12
 financial aid, 14
 First-time students, 2, 3, 9
 Foreign students, 7, 8, 12
 foundations, 15
 Freshmen, 2, 3, 6, 8, 9
 FTEs, 4, 6
 full/part-time, 1, 3, 5, 6, 10, 13
 Full-time Equivalents, 4
 GED (General Equivalency Degree), 8
 gender, 5, 7, 8, 10, 11, 12, 13
 graduate, 1, 2, 3, 4, 7, 8, 10, 11, 12
 high schools, 8
 highest degree, 13
 Hispanic, 1, 2, 13
 household incomes, 14
 Humanities & Arts, 7, 8, 10, 11
 Institutional Research, 5
 instruction, 14
 IPEDS (Integrated Postsecondary Education Data System), 14
 languages, 5
 loans, 14
 lower-division, 6
 Maintenance/Operations, 14
 major, 1, 5, 6, 7, 8, 10, 11
 masters, 10, 11, 13
 Math Placement test, 3, 9
 mean age, 9
 median age, 8, 12, 13
 minority groups, 2
 mode age, 8, 12, 13
 National Aeronautics and Space Administration (NASA), 15
 National Institute of Health (NIH), 15
 New York, 1, 8, 12, 14, 15
 New York City, 12, 15
 New York State, 8, 15
 Non-CUNY, 12
 non-degree, 1, 2, 3, 5, 10
 Non-Resident Aliens, 4, 7, 10, 11, 13
 operating budget, 14
 part-time, 1, 3, 5, 6, 7, 10, 13
 Ph.D. (% held by faculty), 13
 Placement tests, 3
 Postsecondary institutions, 12
 private institutions, 14
 ratio of faculty to students, 13
 Reading Placement test, 3

Registered students, 2
regular students, 9, 13
residence of students, 5
Revenues and Expenditures, 14, 15
SAT (Math & Verbal) scores, 3, 9
schools and divisions, 4, 6, 8
Sciences, 7, 11
SEEK, 2, 3, 5, 9
Student Information Management
 System (SIMS), 7, 8, 11
Social Science, 7, 8, 11
sponsored programs, 15
State Agencies, 15
student, 1, 2, 3, 4, 5, 6, 7, 8, 9, 10, 11,
 12, 13, 14
Tax-Levy Operating Budget, 14
tenured faculty, 13
terminal degree (faculty), 13
The Chronicle of Higher Education, 1,
 4, 7
transfer students, 2, 3, 12, 13
tuition, 14
undeclared majors, 6, 7, 9, 11
undergraduate, 1, 2, 3, 4, 5, 6, 7, 8, 11
upper-division, 6
White, 1, 2, 13
women, 1, 4, 5, 7, 10, 11, 12